

PRODUCT CATALOGUE WITH ACCESSORIES

Handguided Machines and Equipment



www.robelt.info



ROBEL.

Efficient. Ergonomic. Ready for Action.



Photo: Uhlenthut

For more than 100 years ROBEL has been producing railway construction machinery in solid quality and always with measurable benefit for operator and rail infrastructure companies. It is the competence of our staff as well as the continuous pursuit of client oriented solutions that outlines ROBEL as a reliable partner of rail construction industry worldwide.

ROBEL – Great on Track.

With a highly motivated and qualified staff of at present over 480 employees, ROBEL manufactures more than 100 different product groups and supplies them to over 70 countries around the world. A wide range of hand guided machines and equipment for track construction and maintenance is complemented by complex track vehicles for technical operations. Moreover, ROBEL is committed to the development of custom-made solutions for specific projects in close cooperation with its customers.

ROBEL is certified according to EN ISO 9001 and approved to carry out revisions and investigations stipulated by law as well as the extension of rolling stock according to EBO § 32-33.

Our Products at a Glance

Whatever the challenge in track construction, ROBEL has the appropriate machine. The new catalogue provides you with a swift overview of the product portfolio of our hand guided machines. ROBEL work vehicles and special equipment (such as the Mobile Maintenance Unit) are attended to in a separate catalogue.

New Layout – Your Benefit:

- The guidance system at the brim of the catalogue groups products according to their field of application (drilling, wrenching, cutting, etc.)
- More room for extensive technical information
- Complete list of accessories for each machine

Always up to date with ROBEL.info and ROBEL.tv

Our website and our TV portal keep you constantly informed about new developments in our product range.

Our sales team in Freilassing as well as our representatives worldwide are at your full disposal for any questions that might arise.

DRILLING	7-15
CUTTING	17-21
GRINDING	23-30
STRESSING/PULLING/BENDING	32-39
WRENCHING/CLIPPING	41-61
LIFTING/LOADING/TRANSPORTING	63-76
TAMPING	78-83
SECURING/MEASURING	85-97
EQUIPMENT/TOOLS	99
SERVICE	100-101
WORLDWIDE REPRESENTATIONS	102-105



TABLE OF CONTENTS

DRILLING

10.20	Battery Powered Rail Drilling Machine	7
13-35	Rail Drilling Machine	9
10.40	Rail Drilling Machine	11
11.12	Portable Sleeper Drilling Machine	14
11.64	Sleeper Drilling Machine	15

CUTTING

12.20	Battery Powered Rail Band Saw	17
12.70/72	Mobile Rail Band Saw	18
13.70	Rail Cutter	19
13.86	Rail Cutter	21

GRINDING

13.03	Rail Web Grinding Machine	23
13.44	Rail Head Grinding Machine	24
13.48	Rail Head Profile Grinding Machine	26
13.61	Switch Grinding and Deburring Machine	28
14.10	Hydraulic Weld Trimmer	30

STRESSING/PULLING/BENDING

22.28	Switch Blade Lining Device	32
22.38	Hydraulic Rail Bender	33
24.06	Gauge Bar	34
24.08	Rail Pulling Shoe	34
24.12	Hydraulic Rail Pulling and Pushing Device	35
24.70	Hydraulic Rail Stressor	36
25.16	Rail Carrying Roller	38
26.01	Rail De-Stressing Machine	38
66.01	Rail Heater	39

WRENCHING/CLIPPING

30.09	Portable Impact Wrench	41
30.10	Portable Impact Wrench	42
30.20	Battery Powered Impact Wrench	43
30.71	Hydraulic Precision Power Wrench	45
30.75	8-Spindle Precision Wrenching Unit	46
30.82	Universal Power Wrench	47
30.82	RKS Universal Power Wrench	49
30.83	Combined Power Wrench and Drilling Machine	51
30.90	Servo-controlled bolting technology	53
31.82	Fish Bolt Spanner	54
86.12	Torque Meter	54
34.01	Clipping Machine	55
34.02	Hydraulic Clipping Machine	57
34.90	Clipping Devices for Pandrol Fastclip	58
35.01	Fish Bolt Spanner	59
35.02	Fish Bolt Spanner	59
36.01/02/03	Socket Wrench	60
38.01	Support Lever	60
Sockets	one-piece and articulated	61

LIFTING/LOADING/TRANSPORTING

40.05	Rail Lifting Device	63
42.02	Rail Carrying Tongs	63
42.10	Rail Carrying Roller Tongs with Locking Bolt	64
42.11	Rail Carrying Tongs with Safety Latch	64
42.22	Rail Carrying Tongs with Suspension Eye and Locking Device	64
43.02	Rail Mover	65
43.03	Rail Mover	65
43.25	Hydraulic Rail Lifting Device	66
43.32	Rail Threader	67
44.17	Wooden Sleeper Carrying Tongs	68
44.20	Concrete Sleeper Carrying Tongs	69
46.43/46.45	Ratchet Track Jack with Safety Crank Handle	69
46.47/46.50		

47.14	Mechanical Track Jack	70
47.17	Hydraulic Track Jack	70
47.230	Hydraulic Track Lifting Machine with Slewing Device	71
51.12	Light Track Trolley	72
52.16	Transporting Device	73
52.18	Towing Device	74
52.30	Track Trolley	75
58.03/62	Tow bars	75
59.08	Wagon Mover	76
59.10	Drag Shoe	76
68.03	Rail Tilting Device	76
69.20	Sleeper Lifting Device	76

TAMPING

62.05	Vertical Tamper	78
62.04	Electrical Tamping Unit	80
MINIMA 1	Small Tamping Machine	81
MINIMA 2	Lifting Slewing and Tamping Machine	82
GWS75	Tamping Machine	83

SECURING/MEASURING

68.05	Rail Clamp	85
69.30	Worksite Fencing System	87
70.01	Generator	88
73.06	Site Illumination	89
82.05	Versine Measuring Device	91
82.06	Versine Measuring Device	91
82.07	Sighting and Levelling Unit	91
82.11	Track Square	92
83.07	Switch Gauge and Superelevation Measuring Device	93
83.07	Compact Switch Gauge and Superelevation Measuring Device	94
83.15	Fixed Point Measuring Device	94
83.18	Joint Gap Measuring Device	94
83.20	Stock Rail and Switch Blade Gauge	94
83.37	Track Gauge and Superelevation Measuring Device	94
83.37	Compact Track Gauge and Superelevation Measuring Device	95
83.50	Digital Switch Gauge and Superelevation Measuring Device	95
83.87	Platform Clearance Gauge	96
85.01	Rail Head Wear Measuring Instrument (SKM 1)	96
85.01	Rail Head Wear Measuring Instrument (SKM 2)	96
85.02	Measuring Gauge	96
85.05	Rail Measuring Roller	97
85.07	Track Spacing Instrument	97
85.20	Rail Thermometer	97

EQUIPMENT/TOOLS

69.01	Drift Punch	99
69.02	Crow Bar	99
69.03	Hammer	99
69.04	Track Ram	99
69.06	Sleeper Hammer	99
69.07	Ballast Fork	99
69.08	Points Lever	99
69.09	Shovel Made of Steel Sheet	99
69.10	Switch Broom	99
96.12	Cold Chisel	99
69.13	Single-Tone Signal Horn	99
69.15	Multi-Tone Signal Horn	99
69.16	Clip Bolt Ejecting Device	99

SERVICE

100

WORLDWIDE REPRESENTATIONS

102

DRILLING



10.20 Battery Powered Rail Drilling Machine

10.20 Battery Powered Rail Drilling Machine

For efficient very quick drilling of rails

The battery technology by ROBEL.

- Up to 25% time saving.
- Powerful rechargeable batteries and reliable mechanics provide for clean, quiet and powerful working when constructing and maintaining railway systems.
- Low maintenance requirements and extremely efficient!

ITS BENEFITS. YOUR BENEFITS.

Short drilling times thanks to powerful electric motor (1600 W)
Under ideal conditions about 20 seconds/hole

Zero emissions & clean

- Zero emissions
- No unpleasant odours and no dirt

Quiet & ergonomic

- Low noise and vibration

Safe & simple

- Easy and safe handling

Compact & practical

- LED light improves visibility
- No faults arising from „petrol/oil mixtures“



Maintenance-free & cost-efficient

- Motor and battery are maintenance-free!
- No cable required
- Machine can be used immediately
- Fast drilling cycles
- Rechargeable battery - return on investment due to fuel price
- Battery packs, charger and machine can be combined as required (10.20 and 30.20).
- Standard ROBEL accessories can be used.

TECHNICAL SPECIFICATIONS

Weight	19.5 kg
Dimensions (L x W x H)	500 x 190 x 350 mm
Rail spacing	350 mm
Drill bit dia.	up to 38 mm
Power	1600 W
Number of holes	65 at dia. 16 mm/35 at dia. 32 mm

ACCESSORIES

- 7806800001 Spare battery
Dimensions 325 x 140 x 1150 mm (L x W x H)
Weight 5.6 kg
Voltage 43 V
Capacity 12.9 Ah
Energy content 557 Wh
- 7806850001 Charger
Charging period approx. 4 hours
Dimensions 340 x 1200 x 1140 mm (L x W x H)
Weight ~3.1 kg
Voltage, primary 90/220 V
Voltage, secondary 44/60 V
Power 300 W
- 9781890120 Transport box
Made of aluminium, holds and safely transports the machine, coolant reservoir, collecting tray, drill bits and coolant. Fitted with lockable lid and carrying handles.

- 9801040005 Coolant collecting tray
Coolant and swarf collecting tray made of aluminium.
- 9001511027 Coolant concentrate bc25125
5 litres, mixing ratio concentrate:water = 1:12
- 9001511033 antifreeze
Concentrate, 5 litres, mixing ratio e.g. -15 degrees Centigrade:Anti freeze:water = 2:3

Rail profile template

- 8204050100 for S49/S54/UIC60
8204050110 for 115/119/132/136LB
8204050290 for UIC60/U50 FRANCE
8204050130 for U33/U50
8204050300 for EST46/U55
8204050210 for UIC54/UIC54E



Equipment for drilling holes in grooved rails

Quick-clamping device

- 9801040089 for grooved rails up to RI60
- 9801040090 for high grooved rails (greater than RI60, e.g. RI210/95+80/80a)

Rail profile templates

- 2 each outside and grooved side are required
- 8204050170 RI60, outside, drilling height 73mm,
- 8204050180 RI60, grooved side, drilling height 73mm

Multi-hole drilling templates

Depending on the design, the template is placed at the rail end or on the continuous section of rail. Precise drilling intervals are achieved by simply inserting the drilling machine into the distance blocks.

Types for 2, 3, 4 or 6 holes

- 8204050005 for UIC60/U50/60/170/170 for 3 holes from the rail end
- 8204050002 for UIC60 (ISOL./Reinforced)70/165/4mmTF for 4 holes in continuous rail
- 8204050007 for U55/U33/57.5/160
- 8204050009 for PLM48LP/65/120

Core drill 95.41 - ASP for flat bottom rails with 3-cut tooth geometry

Cobalt alloyed high speed steel on a particle metallurgy basis with the highest purity and ductility for optimum cutting properties and lifespan. With 19 mm Weldon shank, short variant, cutting depth 25 mm. Optimum drilling performance for rail web tensile strength up to 900 N/mm².

- 9002501675 dia. 23 mm
- 9002501658 dia. 26 mm
- 9002501643 dia. 32 mm
- 9002501654 dia. 33 mm

Use a coolant pin to achieve good drilling results and optimum life of the drill bits!

Ejector pin/cooling pin

- 9002501646 for core drill bits, dimensions 6.35 x 77 mm

Spiral drill bits

Cobalt alloy HSSE quality for drilling holes in maximum strength rails. Particularly suitable for production of electrical rail contacts, earthing bridges and jumpers. Drill bits with shank and permanent coolant supply. A suitable adapter is required for their use.

- 9820350210 dia. 10 mm
- 9820350260 dia. 12 mm

Adapter

For use with the aforementioned spiral drill bits. Adapter with 19 mm Weldon shank and drill bit seat appropriate to the drill bit diameter used. Permanent coolant supply

- 9820350120 for spiral drill bit dia. 10 + 12 mm



Quick-clamping device for grooved rail



Clamping arm for conductor rail



Multi-hole drilling template for 2 or 3 holes



Multi-hole drilling template for 4 holes



Drill bit, adapter, coolant ejector pin



Adapter and 13 mm spiral drill bit



Adapter



Transport case



Coolant collecting tray

10.35 Rail drilling machine

For drilling flat bottom and grooved rails, also on free rail ends and in switch areas.

- Robust spiral drill technology
- Quick-clamping device
- Automatic drill feed
- Fast feed and return of drill bit
- Drill yoke with quick-clamping device and anti-twist fishing surface clamping template for three rail types S49, S54, UIC60
- Automatic height adjustment of drill, even for worn rails
- Indicator for bore centre in longitudinal rail direction
- Container for drilling fluid



TECHNICAL SPECIFICATIONS

Drive	air-cooled 4-stroke petrol engine	electric motor
Type	Honda GXV 160	400 V, 50 Hz
Output	3.6 kW at 3000 rpm	2.7 kW at 2850 rpm
Max. drill spindle speed	62 rpm	59 rpm
Drilling time (automatic feed)	approx. 90 s	
Drill mounting of drill spindle	Morse taper MK4	
Max. drill diameter at a rail web strength of 1000 N/mm	40 mm	
Smallest distance between rail end and drill hole	40 mm	
Smallest distance between rail heads in switch areas	55 mm	
Dimensions (L x W x H)	920 x 560 x 540 mm	
Total weight	~66 kg	~68 kg

ACCESSORIES

Spiral drill bits 95.02/HSS

For drilling alloyed and unalloyed steel up to approx. 900 N/mm

- of high speed steel (HSS)
- with Morse taper shank MT2/MT3/MT4

With MT2

9002501501	dia. 17 mm
9002501502	dia. 18 mm
9002501563	dia. 19 mm
9002501575	dia. 20 mm
9002501599	dia. 21 mm
9002501506	dia. 22 mm
9002501576	dia. 23 mm

With MT3

9002501215	dia. 24 mm
9002501507	dia. 25 mm
9002501508	dia. 26 mm
9002501548	dia. 27 mm
9002501510	dia. 28 mm
9002501512	dia. 29 mm
9002501513	dia. 30 mm
9002501549	dia. 31 mm



With MT4

9002501515	dia. 32 mm
9002501516	dia. 33 mm
9002501518	dia. 34 mm
9002501605	dia. 35 mm
9002501606	dia. 36 mm
9002501519	dia. 38 mm

Spiral drills 95.02/HSS/E

For drilling hard to machine materials at high thermal loading. Particularly suited for drilling rust- and acid-resistant steels (V2A, V4A, etc.), high chrome alloyed and heat-resistant steels, steel and cast steel up to at least ~1100 N/mm tensile strength. About 5-fold longer lifetime compared to HSS quality with steel of approx. 900 N/mm .

- of cobalt alloyed high speed steel (HSS/E)
- with Morse taper shank MT2/MT3/MT4
- surface specially treated so less tendency to weld on, plus improved chip clearance.

With MT2

9002501503	dia. 18 mm
9002501591	dia. 20 mm
9002501505	dia. 21 mm
9002501601	dia. 22 mm

ACCESSORIES

With MT3

9002501592	dia. 24 mm
9002501509	dia. 26 mm
9002501511	dia. 28 mm
9002501604	dia. 29 mm
9002501514	dia. 30 mm

With MT4

9002501199	dia. 32 mm
9002501517	dia. 33 mm
9002501593	dia. 34 mm

9894024422	Rail profile template Included in machine price for S49, S54 and UIC 60 rails.
------------	---

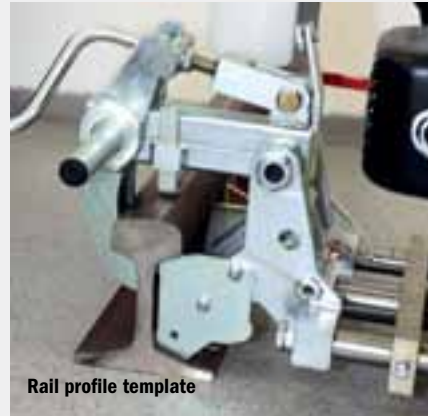
For other rail sections upon request. Please state the precise dimensions.

9002501198	Reducing sleeve Morse taper MT 4/3 for drill bit diameters 23.5 mm to 31.5 mm
9002501197	Reducing sleeve Morse taper MT 4/2 for drill bit diameters 14.5 mm to 23 mm
9002501196	Reducing sleeve Morse taper MT4/1 for drill bit diameters under 14 mm

Multi-hole drilling templates

For drilling holes with a precise spacing (<0.2 mm), e.g. for insulated joints.

8001035010	Multi-hole drilling template incl. track panel template, drill guide and mandrel for S 49 and S 54 rails with drilling hole distance from rail end 70 mm + 165 mm
8001035012	Multi-hole drilling template for UIC 60 rail, otherwise as above
9894021035	Transport and storage box, wooden, with lockable lid and carrying handles
9002501016	Drift



10.40 Rail Drilling Machine

For economic and fast drilling of rail sections

- For all rail web holes in the signalling and track construction sectors
- Drilling time about 30 – 60 s depending on diameter and rail section
- Very high mobility due to 4-stroke petrol engine
- One-man operation
- Manual feed
- Coolant reservoir with pressure pump
- Coolant flows through drill spindle and drill bit



TECHNICAL SPECIFICATIONS

Drive	air-cooled 4-stroke petrol engine	3-phase motor
Type	HONDA-GX35	400 V/50 Hz
Output	1.2 kW at 7000 rpm	0.55 kW at 2800 rpm
Max. drill spindle speed 300 rpm	217 rpm	
Max. drill diameter for rail web tensile strength	900 N/mm ²	38 mm
Dimensions (L x W x H)	420 x 310 x 530 mm	500 x 300 x 520 mm
Weight	~19 kg	~21 kg

ACCESSORIES

Equipment for drilling holes in flat bottom rails

Rail profile templates

Two items each per rail section are required

8204050100	for S49/S54/UIC60
8204050110	for 115/119/132/136LB
8204050120	for R65/R50
8204050130	for U33/U50
8204050140	for UIC60/U52
8204050190	for BV50
8204050200	for SJ 43
8204050210	for UIC54/UIC54E
8204050230	for U54
8204050240	for U69
8204050250	for 53KG Australia
8204050270	for 60KG Australia
8204050280	for 31.75 kg Greece
8204050290	for UIC60/U50 France
8204050300	for EST46/U55
8204050310	for SBB I
8204050320	for S40
8204050330	for VST36
8204050340	for PLM48LP
8204050350	for S33, drilling height 57 mm
8204050360	for NP46, drilling height 62.25 mm
8204050370	for U33/PLM48LP
8204050400	for 100 RA
8204050410	for Xa

8204050420	for XXIVa
8204050470	for R43
8204050480	for UST36, dr. height 56 mm
8204050510	for 80LB/dr. height 55.6 mm
8204050520	for 100LB/dr. height 63.5 mm
8204050530	for 20KG/dr. height 45 mm
8204050540	for Form A dr. height 59.5mm
8204050550	for S52 dr. height 80.5 mm
8204050570	for AS41KG dr. height 60.3 mm
8204050580	for AS50KG dr. height 67mm
8204050630	for 50T Belgium
8204050650	for AS47KG
8204050720	for 57 kg/m dr. height 70mm
8204050730	for 60 kg/m dr. height 70mm
8204050740	for 48 kg/m dr. height 66mm
8204050750	for 48+57 kg/m South Africa
8204050760	for 57+60 kg/m South Africa



Rail profile template

For grooved rails

(only with clamping device 9801040089)

- 8204050150 RI60/DH 75 mm/outside
- 8204050160 RI60/DH 75 mm/grooved side dr. height
- 8204050170 RI60/RI 59 outside, DH 73 mm
- 8204050180 RI60/RI59 grooved side, DH 73 mm
- 8204050260 for PH 37/DH 75 mm/outside +
2x thrust washer 9801040068
- 8204050380 for RI55N of outside
- 8204050390 for RI55N of grooved side
- 8204050430 for PH37A of outside, DH=71mm +
2x thrust washer 9801040068
- 8204050490 for NP4aM/DH 82 mm/outside +
2x thrust washer 9801040068
- 8204050500 for G51, DH 53 mm
- 8204050590 for NT1/DH 77 mm/outside
- 8204050600 for NT1/DH 77 mm/inside
- 8204050660 for PH37 gauge bar

For conductor rails and small grooved rails

(use only with clamping device 8204100004)

- 8204050221 for STR40 and ASS5100
- 8204050440 for S20
- 8204050450 for 20 kg/m customer Altiservice
- 8204050460 for 14.5 kg/m customer Altiservice
- 8204050610 for 81LB (40.31 kg/m)
- 8204050620 for 30 kg/m South Africa
- 8204050640 for AS31KG
- 8204050680 for VST C DH 50 mm
- 8204050690 for 70LB ASCE DH 52 mm
- 8204050700 for 60LB ASCE DH 48.4 mm
- 8204050710 for S30, DH 48.25 mm

Equipment for drilling holes in grooved rails

- 9801040089 Quick-clamping device for grooved rails up to RI60
- 9801040090 Quick-clamping device for high grooved rails
(greater than RI60, e.g. RI210/95+80/80a)
- 9801040068 2 additional thrust washers
- 8204100004 Clamping arm for conductor rail
Device to be fitted to quick-clamping device for
flat bottom rails for use with conductor rails
- 9002501655 Ejector pin/cooling pin, long,
for adapter 8203550100
- 8203550100 Adapter, extension from 1 inch to 2 inches

To achieve good drilling results and optimum life of the drill bits, please do not forget the coolant pin!

- 9002501646 Ejector pin/cooling pin for core drill bit,
dimensions 35 x 77 mm

For other rail sections, please enclose a drawing or provide precise details of the dimensions required (preferably in digital format).

**Core drill 95.41-Asp for flat bottom rails,
With 3-cut tooth geometry**

Cobalt alloy high speed steel on a particle metallurgy basis with the highest purity and ductility for optimum cutting properties and lifespan. With 19 mm Weldon shank, short variant, cutting depth 25 mm. Optimal drilling performance for rail web tensile strength up to 900 N/mm².

- 9002501649 dia. 16 mm
- 9002501651 dia. 17 mm
- 9002501650 dia. 18 mm
- 9002501657 dia. 19 mm
- 9002501662 dia. 22 mm
- 9002501675 dia. 23 mm
- 9002501647 dia. 24 mm
- 9002501676 dia. 25 mm
- 9002501658 dia. 26 mm
- 9002501648 dia. 27 mm
- 9002501659 dia. 27.5 mm
- 9002501652 dia. 28 mm
- 9002501667 dia. 29 mm
- 9002501642 dia. 30 mm
- 9002501680 dia. 31 mm
- 9002501643 dia. 32 mm
- 9002501654 dia. 33 mm
- 9002501653 dia. 34 mm
- 9002501663 dia. 36 mm
- 9002501661 dia. 38 mm

Spiral drill bits

Cobalt alloyed in HSSE quality for drilling holes in maximum strength rails. Particularly suitable for production of electrical rail contacts, earthing bridges and jumpers. Drill bits with shank and permanent coolant supply. For their use a suitable adapter (see below) is required.

- 9820350240 dia. 7.5 mm
- 9820350200 dia. 8 mm
- 9820350210 dia. 10 mm
- 9820350260 dia. 12 mm
- 9820350220 dia. 13 mm
- 9820350250 dia. 13.5 mm
- 9820350230 dia. 15 mm

Other diameters available upon request.



Quick-clamping device for grooved rail



Quick-clamping device for grooved rail

ACCESSORIES

Adapter for spiral drill bits

For use with the aforementioned spiral drill bits. Adapter with 19 mm Weldon shank and drill bit seat appropriate to the drill bit diameter used. Permanent coolant supply

- 9820350140 dia. 7.5 mm
- 9820350110 dia. 8 mm
- 9820350120 dia. 10-12 mm
- 9820350130 dia. 13-13.5-5 mm

Multi-hole drilling templates

Depending on the design, the template is placed at the rail end or on the continuous

section of rail. Precise drilling intervals are achieved by simply inserting the drilling machine into the distance blocks. Multi-hole drilling template for 2 holes from the rail end, complete, comprising 1 clamp, 1 drilling template with 2 distance blocks and 1 rail end stop.

- 8204050004 for SBBI/SBBIV/66/200
- 8204050006 for EST46/67.5/140
- 8204050007 for U55/U33/57.5/160
- 8204050008 for U50/60/170
- 8204050009 for PLM48LP/65/120

Multi-hole drilling template for 3 holes from the rail end
Complete, comprising 2 clamps, 1 drilling template with 3 distance blocks and 1 rail end stop

- 8204050005 for UIC60/U50/60/170/170
- 8204050010 for S33
- 8204050026 for R 50

Multi-hole drilling template for 4 holes in a continuous section of rail
Complete, comprising 2 clamps, 1 drilling template with 4 distance blocks. Cutting width of 4 mm is taken into account.

- 8204050002 for UIC60/ISOL./Reinforced)
70/165/4 mm cutting width
- 8204050003 for UNI50/UNI60/ISOL/
Reinforced/6 mm cutting width

Multi-hole drilling template for 6 holes in a continuous section of rail
Complete, comprising 2 clamps, 1 drilling template with 6 distance blocks. Cutting width of 4 mm is taken into account.

- 8204050025 for S49

For other rail sections, please enclose a drawing or provide precise details of the dimensions/cutting width required (preferably in digital format).

9801040004 Aluminium transport and storage box for holding and safely transporting the machine, coolant reservoir, collecting tray, drill bits and coolant. Fitted with lockable lid and carrying handles.

9801040005 Aluminium coolant and swarf collecting tray

9001511027 Coolant concentrate BC25125
5 litres, mixing ratio concentrate:water = 1:12

9001511033 Antifreeze, concentrate, 5 litres, mixing ratio e.g. -15 degrees Centigrade:antifreeze:water = 2:3



Adapter and 13 mm spiral drill bit



Drill bit, adapter and coolant ejector pin



Mehrloch-Bohrlehre für 2 oder 3 Bohrungen



Multi-hole drilling template for 4 holes



Transport case

11.12 Portable Sleeper Drilling Machine

For drilling holes in wooden sleepers

- Compact & powerful
- Easy to handle
- Highest possible safety due to centrifugal clutch
- Engine speed controlled by hand throttle lever
- Replaceable chuck for drill bits up to 16 mm shank diameter
- Continuously adjustable drilling depth
- with drill sleeve
- Depth stop



TECHNICAL SPECIFICATIONS

Drive	air-cooled 2-stroke petrol engine
Type	Hitachi DW 25 EF
Output	0.88 kW at 7000 rpm
Max. drill spindle speed	325 rpm
Max. drill diameter	22 mm
Max. drilling depth	180 mm
Continuously adjustable	100 - 180 mm
Dimensions (L x W x H)	450 x 320 x 300 mm
Total weight	~7.5 kg

ACCESSORIES

9002500108 Steel sheet transport and storage case

Sleeper drill bits

Automatic feed by screw point, made of tool steel, Lewis profile, single-blade without taper tap, length 245 mm, cylindrical shank of dia. 12 mm

9002501535	dia. 13 mm
9002501536	dia. 14 mm
9002501537	dia. 15 mm
9002501550	dia. 16 mm
9002501538	dia. 17 mm
9002501539	dia. 18 mm
9002501541	dia. 20 mm
9002501542	dia. 22 mm

Other diameters available upon request.



Sleeper drill bit dia. 18 mm

11.64 Sleeper Drilling Machine

For drilling holes in wooden sleepers

- Powerful & accurate guidance of drill bit
- Drive via a heavy-duty narrow V-belt with self-tensioning device
- Simple operation
- Drill feed via screw point and return spring
- Continuously adjustable drilling depth
- Drill spindle adjustable for angled holes (max. 6°)
- Quick-release chuck for drill bits with cylindrical shank up to 16 mm
- With drill sleeve
- Hub flange and replaceable drill guide for centred drilling through baseplate holes
- Rail running gear with insulated flanged wheels
- Plug-in outrigger with insulated castor



TECHNICAL SPECIFICATIONS

Drive	air-cooled 4-stroke petrol engine	electric motor, 3-phase
Type	ROBEL 190	400 V/50 Hz
Output	4.9 kW at 4000 rpm	2.7 kW at 2850 rpm
Max. drill spindle speed 1200 rpm	950 rpm	
Max. drill diameter	22 mm	
Max. drilling depth	180 mm	
Max. distance of drill spindle from rail centre	375 mm	
Max. capacity of chuck	16 mm	
Normal design suitable for:		
Rail height from/to	90/180 mm	
Head width up to	75 mm	
Gauge	1435 mm	
Dimensions (L x W x H)	1000 x 400 x 880 mm	
Total weight	~63 kg	~66 kg

ACCESSORIES

Sleeper drill bits

Automatic feed by screw point, made of tool steel, Lewis profile, single-blade without taper tap, length 285 mm, cylindrical shank of dia. 13.8 mm

- 9002501707 dia. 16 mm
- 9002501708 dia. 17 mm
- 9002501709 dia. 18 mm

Other diameters available upon request.



Sleeper drill bit dia. 18 mm

CUTTING



13.70 Rail Cutter

12.20 Battery Powered Rail Band Saw

For fast and economical sawing of maximum strength rails.

The battery technology by ROBEL.

ITS BENEFITS. YOUR BENEFITS.

Maintenance-free & cost-efficient

- Short sawing times due to heavy duty electric motor (1600 W).
- Low noise and vibration
- Can be used immediately
- Zero emissions due to battery technology
- Return on Investment due to independent flexibility

Applications

- Can be used for any condition of the track bed
- From town to country
- Independent of climate and topography
- From single spots to large scale repairs

NEW



CUTTING

TECHNICAL SPECIFICATIONS

Drive	Battery
Output	1.6 kW
Cutting range W x H	165 x 180 mm
Bimetallic band saw blade	1965 x 27 x 0.9 mm
Power	
Cutting speed	60 m/min as standard
Number of cuts per saw blade	about 20 cuts
Saw blade	Bi Band RIX-ASTROFLEX Rail 18/45
Manual spindle feed	
Coolant reservoir	0.75 l, 1.5 l, 5 l
Dimensions (L x W x H)	630 x 480 x 700 mm
Saw horse weight	~20 kg
Weight	~59 kg

ACCESSORIES

- 9800127001 Rix-Astroflex saw blade 1800 x 27 x 0.9 4/5 chip-splitter toothing
- 7806800001 Spare battery
Dimensions ~325x140x150 mm (L x W x H)
Weight 5.6 kg
Voltage 43 V
Capacity 12.9 Ah
Energy content 557 Wh
- 7806850001 Charger
Charging period approx. 4 hours
Dimensions ~340/200/140 mm (L x W x H)
Weight ~3.1 kg
Voltage, primary - 90/220 V
Voltage secondary - 44/60 V
Power 300 W

- 9800127002 Rix-Astroflex saw blade for 12.70, 1965 x 27 x 0.9 4/5 chip-splitter toothing
- 9001511027 Coolant concentrate Bc25125, 5 litres, mixing ratio of concentrate:water = 1:12
- 9801040005 Aluminium coolant and swarf collecting tray
- 9801270004 Transport and storage box for 12.70 with skids, glued and nailed, with side handles, lockable
- 9800127004 Splitting wedge with fastening cable
- 9800127006 5-litre pressure tank with bayonet coupler
- 9008120317 Extension cable 10 m



12.70/12.72 Mobile Rail Band Saw

For fast and economical sawing of maximum strength rails

- Easy, precise positioning
- The rail need not be lifted off the ballast bed, thus fast and safe working on site is ensured.
- Saw blade guide with carbide plates guarantees precise cuts.
- Monitoring of optimum saw blade tension by safety switch.
- Quiet and environmentally friendly
- Single handle for electric and hydraulic motor
- Roll-over bar for electric and hydraulic motor



12.70



12.72

ACCESSORIES

- 9800127002 Rix-Astroflex saw blade for 12.72, 1965 x 27 x 0.9 4/5 chip-splitter toothing
- 9800127002 Rix-Astroflex saw blade for 12.70, 1965 x 27 x 0.9 4/5 chip-splitter toothing
- 9001511027 Coolant concentrate Bc25125, 5 litres, mixing ratio of concentrate:water = 1:12
- 9801040005 Aluminium coolant and swarf collecting tray
- 9801270004 Transport and storage box for 12.70 with skids, glued and nailed, with side handles, lockable
- 9800127004 Splitting wedge with fastening cable
- 9800127006 5-litre pressure tank with bayonet coupler
- 9008120317 Extension cable 10 m

TECHNICAL SPECIFICATIONS

Drive	4-stroke petrol engine	Electric motor
Type	HONDA GX 31 TE	50 Hz 240 V
Output	1.1 kW at 7000 rpm	0.55 kW at 2800 rpm
Cutting range W x H		
12.70	225 x 200 mm	
12.72	165 x 180 mm	
Bimetallic band saw blade	1965 x 27 x 0.9 mm	
Output		
Cutting speed	60 m/min as standard	
Number of cuts per saw blade	about 20 cuts	
Saw blade		
12.70	Bi Band RIX-ASTROFLEX Rail 19/45	
12.72	Bi Band RIX-ASTROFLEX Rail 18/45	
Manual spindle feed		
Coolant reservoir	0.75 l, 1.5 l, 5 l	
Dimensions (L x W x H)		
12.70	950 x 480 x 620 mm	
12.72	630 x 480 x 700 mm	
Saw horse weight	20 kg	
Weight		
12.70 depending on drive motor	~66 kg	
12.72 depending on drive motor	~62 kg	

13.70 Rail Cutter



For fast and economical cutting of maximum strength rails

- Short cutting times, about 1 min. possible for rail profile 49E1
- The cutter can be clamped in such a way that sparks consistently fly downwards and cutting discs are used in an optimum manner.
- Cutting also possible using articulated arm
- Sturdy, light-weight aluminium guide frame with articulated arm and quick-clamping device for flat bottom and grooved rails
- With kerf indicator for precise determination of the cutting point.
- The cutting method from above and at an angle downwards leads to direct weight relief for the operator.
- Easy starting of the motors with Smart-Start decompression equipment.
- Optimum filter effect due to air injection technology and impregnated pre-filter and fine filter
- Centrifugal clutch as integrated safety feature
- Spark protection for cutting discs – pre-tensioned and continuously adjustable
- Adapter for cutting discs with 1 inch hole
- Accessibility – V-belt tension without disassembly of casing
- Electronic ignition, sealed against dust and humidity



TECHNICAL SPECIFICATIONS

Drive	air-cooled 2-stroke petrol engine	air-cooled 2-stroke petrol engine
Type	Husqvarna 3122K	Husqvarna K1260 Rail
Output	5.8 kW at 9750 rpm	5.8 kW at 9500 rpm
Cutting disc diameter	350 mm	400 mm
Max. cutting disc speed	5400 rpm	4700 rpm
Max. permissible circumferential speed	100 m/s	100 m/s
Cutting rate about	1 min/cut	about 1 min/cut
49E1	to 8 cuts/disc	up to 10 cuts/disc
60E1	to 6 cuts/disc	up to 8 cuts/disc
Guide frame	~8 kg	~5.5 kg
Motor cutter	~17 kg	~15.6 kg
Cutting disc	~0.8 kg	~1.3 kg
Total weight	~25.8 kg	~22.4 kg
Dimensions (L x W x H)	800 x 400 x 400 mm	900 x 250 x 480 mm

Cutting discs

- 9002000309 dia. 350 x 4 x 22.2 mm (TY)
- 9002000308 dia. 350 x 4 x 22.2 mm (KL)
- 9002000300 dia. 350 x 4 x 25.4 mm (TY) 1" holder
- 9002000436 dia. 350 x 4 x 25.4 mm (KL) 1" holder
- 9002000304 for aluminium, dia. 350 x 4 x 22.2 mm (TY)
- 9002000321 for aluminium, dia. 350 x 4 x 25.4 mm (TY) 1" holder
- 9002000348 for stone, dia. 300 x 3.5 x 22.2 mm,
max. circumferential speed 80 m/s
(corresponds to 5100 rpm)
- 9002000911 dia. 400 mm x 4 mm x 25.4 mm

- 8001381001 Safety Blocking Device ROBEL 13.81
For cutting rails under compressive stress,
incl. 1 pair of wedges
- 8001381002 Spare wedges, 1 pair 13.81/size 11

13.84 Bogle

For cutting asphalt

- Comfortable working in upright position
- A precise cut is the condition for long durability of asphalt work.

- 8001384005 13.70 (350 mm)
- 8001384006 13.84 for 13.70 (400 mm)
- 8709900001 Steel transport and storage box, with lockable lid
and two carrying handles, with holder for 10 cutting
discs, dimensions 900 x 450 x 450 mm (L x W x H)



Cutting disc
dia. 350 mm x 4 mm x 22.2 mm (TY)



Safety blocking wedge device 13.81



Bogle 13.84 for 13.70
(cutting disc 350 mm)

13.86 Rail Cutter

For fast and economical cutting of maximum strength rails.

- Cutting of rails in one step using the alloy swivel guide arm
- A spring on the hinged arm provides for optimum balancing of the load
- The kerf indicator fixes the unit precisely at the cutting point of the rail
- Easy start-up due to Smart Start decompression equipment
- Optimum dust protection due to dry-type filter cartridge with pre-filter
- Electronic speed limiter
- Centrifugal clutch
- Sparks are redirected with the adjustable hood
- Sturdy, light-weight aluminium guide frame with articulated arm and quick-clamping device



TECHNICAL SPECIFICATIONS

Drive	air-cooled 2-stroke petrol engine	electric motor, three-phase (ROBEL 13.80)	
Type	Husqvarna 3122 K	400 V, 50 Hz	
Output	5.8 kW at 9750 rpm	2.7 kW at 2850 rpm	
Cutting disc diameter	300 mm	350 mm	300 mm
Max. cutting disc speed	5100 rpm	5100 rpm	3900 rpm
Max. permissible circumferential speed	80 m/s	100 m/s	80 m/s
Cutting rate about	1 min/cut about	1 min/cut	about 2 min/cut up to
49E1	up to 6 cuts/disc	up to 10 cuts/disc	6 cuts/disc
60E1	up to 4 cuts/disc	up to 6 cuts/disc	4 cuts/disc
Guide frame	~11.6 kg	~11.6 kg	~12 kg
Motor cutter	~17 kg	~17.8 kg	~28.5 kg
Cutting disc	~0.5 kg	~0.8 kg	~0.5 kg
Total weight	~29.1 kg	~30.2 kg	~41 kg
Dimensions (L x W x H)	675 x 360 x 380 mm	650 x 350 x 380 mm	

ACCESSORIES

Cutting discs

9002000307	dia. 300 mm x 3.5 x 22.2 (KL)	8001380010	Clamping device for grooved rails with screw; Quick release clamp when using the cutter for grooved rails up to RI 60 (max. head width 130 mm)
9002000302	dia. 300 mm x 3.5 mm x 25.4 mm, (KL) 1" holder	80013800020	Guide frame assembly for grooved rails
9002000324	for insulated joints and 7mm joint width, dia. 300 mm x 6 mm x 22.2 mm (TY)	8001381001	Safety Blocking Device ROBEL 13.81 for cutting rails under compressive stress, incl. 1 pairs of wedges
9002000348	for stone, dia. 300 x 3.5 x 22.2 mm, max. circumferential speed 80 m/s (corresponds to 5100 rpm)	8001381002	Spare wedges, 1 pair 13.81/size 11
9002000309	dia. 350 mm x 4 mm x 22.2 mm (TY)	80013844004	Bogie 13.84 for 13.86 (with cutting disc dia. 300 mm)
9002000308	dia. 350 mm x 4 mm x 22.2 mm (KL)	8399900001	Steel sheet transport and storage case with lockable lid and two carrying handles, for machines with petrol engine
9002000300	dia. 350 mm x 4 mm x 25.4 mm (TY) 1" holder		
9002000436	dia. 350 mm x 4 mm x 25.4 mm (KL) 1" holder		
9002000304	for aluminium, dia. 350mm x 4mm x 22.2mm(TY)		
9002000321	for aluminium, dia. 350mm x 4mm x 25.4mm(TY) 1" holder		
9002000348	for stone, dia. 300 x 3.5 x 22.2 mm, max. circumferential speed 80 m/s (corresponds to 5100 rpm)		

GRINDING



13.44 Rail Head Grinding Machine

13.03 Rail Web Grinding Machine

For derusting the rail web for a continuous current flow of the flash welder or to prepare an insulated joint

- Grinding angle can be set precisely depending on the rail
- Overload protection
- Profile grinding wheel with rotatable protective hood
- Transverse travelling gear for easy movement and positioning of the machine
- Rollers made of insulated material



TECHNICAL SPECIFICATIONS

Drive	4-stroke petrol engine
Type	HONDA GX 270
Output	6.6 kW at 3,600 rpm
Grinding disc speed	4500 rpm
Profile grinding wheel, for rails from S49	
Outside diameter	135 mm
Inside diameter (holder)	25.4 mm (1")
Height	90 mm
Dimensions (L x W x H)	
Machine	1800 x 600 x 1100 mm
Transverse travelling gear	1850 x 530 x 200 mm
Weight, transverse travelling gear	~25 kg
Weight, machine	~95 kg

ACCESSORIES

Profile grinding wheels

9898081080 for rail sections S49 to R65,
135 x 55 x 90/50/25.4

9002000556 for rail sections smaller than S49,
135 x 55 x 70 x 20 x 25.4

8988980001 Conversion kit for wire brush

8329910001 Ballast box (for transverse travelling gear)



Conversion kit for wire brush



Profile grinding

13.44 Rail Head Grinding Machine



For true-to-form and straight reprofiling of the rail head at weld joints as well as of built-up welded running surfaces

ITS BENEFITS. YOUR BENEFITS.

- Powerful 4-stroke petrol engine ROBEL 190 with diaphragm carburettor.
- 2 designs for right-hand and left-hand operation with adapted guide handle.
- Precise setting of cutting angle via a notched adjuster
- Due to the time saving and precise work, more profiling can be carried out in a given time.
- More safety for the operator due to the secured clamping which does not release with vibrations.

Applications

From town to country



13.44 R right side handle

TECHNICAL SPECIFICATIONS

Drive	4-stroke petrol engine	2-stroke petrol engine	Electric motor, 3-phase
Type	ROBEL 190	Minsel	400 V, 50 Hz
Output	4.9 kW at 4000 rpm	4.9 kW at 4500 rpm	2.7 kW at 2850 rpm
Grinding disc speed	4400 rpm	4500 rpm	4250 rpm
Grinding disc with M20 central nut attachment			
Outside diameter	125 mm		
Inside diameter	55 mm		
Height	60 mm		
Max. permissible circumferential speed	50 m/s		
Roller spacing	1000 mm		
Grinding disc infeed, continuously adjustable	70 mm		
Dimensions (L x W x H)	1020 x 680 x 690 mm		
Total weight	~59 kg	~60 kg	~64 kg

ACCESSORIES

Cup wheels

- 9002000687 dia. 125 mm Central nut holder M20, max. circumferential speed 50 m/s, 125 x 65, grit size A12
- 9002000688 dia. 125 mm Screw attachment 4xM8, max. circumferential speed 50 m/s 125 x 65, pitch circle dia. 90, grit size A12
- 9002000690 dia. 150 mm, Central nut holder M20, max. circumferential speed 50 m/s, 150 x 65, grit size A14
- 9002000689 dia. 150 mm Screw attachment 4xM8, max. circumferential speed 50 m/s, 150 x 65, pitch circle dia. 115, grit size A14
- 9878081000 Cup wheel dia. 90 mm conical, for frog noses and switches, central nut holder M20 (also suitable for the running surface of grooved rails), circumferential speed max. 50 m/s, 90 x 65, grit size A14
- 9002000330 dia. 90 mm cylindrical for built-up welds, central nut holder M20
- 8931002007 Centring nut, hardware for steel wire brush
- 9000200182 Steel wire brush (plaited) Steel wire brush e.g. for derusting rails (do not use without centring nut)
- 8449900065 Guide frame, vibration-damped, in place of standard part
- 8444150140 Spark safety hood, foldable, to catch flying sparks
- 8001344007 Multi-roller carrier, for corrugation grinding
- 8001344008 Outrigger compl. Gauge 1435 mm to the other rail, insulated, with incline adjustment
- 9801344001 Transport box, wooden, with lockable lid and two carrying handles
- 8448980001 Crane rail finishing set with 125 mm dia. cup wheel
- 8448980002 Crane rail finishing set with 150 mm dia. cup wheel Only for 13.44 with ROBEL 190 motor
- 8449900035 Extra handle, located centrally on the fan housing of the drive motor, improves the guidance and ergonomics for all grinding tasks. Supplied as an assembly kit with instructions. Simple installation using three screws.
- 8449900036 Air filter guard improves the supply of intake air and results in a reduction in the amount of abrasive dust. Supplied as an assembly kit with instructions.



Cup wheels



Centring nut and steel wire brush



Spark safety hood



Air filter guard



Multi-roller carrier and outrigger



Extra handle

13.48 Rail Head Profile Grinding Machine



For true-to-form grinding of the rail head after welding work to restore a perfect profile

ITS BENEFITS. YOUR BENEFITS.

- 100% copy of the rail profile due to special copying device.
- Simple operation in ergonomic work position
- More safety
 - during non-operation due to dead man's brake
 - during grinding due to depth stop
- due to good visibility from both operating sides, also at night due to LED lighting
- Ergonomic operation
 - whilst standing upright
 - due to ideal positioning of the cup wheel with the rocker switch
 - and the hand wheel in optimum grinding position
 - Can be operated with left or right hand with optimum view of the grinding area

Applications

- For thermite and flash-butt welding
- Can be used with 125 mm, 150 mm and 175 mm cup wheels, even for high rail profiles



TECHNICAL SPECIFICATIONS

Drive	4-stroke petrol engine	Electric motor
Type	Honda GX 270	3-phase motor
Output	6.6 kW at 3600 rpm	4 kW at 2850 rpm
Cup wheel	dia. 125 mm, also dia. 150 mm	dia 150 mm, also dia. 125 mm
Max. permissible circumferential speed	50 m/s	
Grinding disc speed	4200 rpm	4500 rpm
Grinding base/roller spacing	1000 mm	
Weight	~99.5 kg	~99.5 kg
Weight, outrigger	~28 kg	~25 kg
Length without/with folding handles	1450/1840 mm	1550/1975 mm
Width without/with folding handles	550/580 mm	325/490 mm
Height	870 mm	880 mm
Copy roller spacing	1000 mm	
Pivoting angle, copying carriage	92°	

ACCESSORIES

Cup wheels

- 9002000687 dia. 125 mm, central nut holder M20, max. circumferential speed 50 m/s, 125 x 65, grit size A12
- 9002000688 dia. 125 mm screw attachment 4xM8, max. circumferential speed 50 m/s, 125 x 65, pitch circle dia. 90, grit size A12
- 9002000690 dia. 150 mm, central nut holder M20, max. circumferential speed 50 m/s, 150 x 65, grit size A14
- 9002000689 dia. 150 mm screw attachment 4xM8, max. circumferential speed 50 m/s, 150 x 65, pitch circle dia. 115, grit size A14
- 9878081000 dia. 90 mm conical for frog noses and switches, central nut holder M20 (also suitable for the running surface of grooved rails), circumferential speed max. 50 m/s, 90 x 65, grit size A14
- 9002000330 dia. 90 mm, cylindrical for built-up welds, central nut holder M20, max. circumferential speed 50m/s, 90 x 65, grit size A14
- 8489910003 Grooved rail kit
- 8931002007 Centring nut, hardware for steel wire brush
- 9000200182 Steel wire brush (plaited), e.g. for derusting rails



Cup wheels



Centring nut and steel wire brush

13.61 Switch Grinding and Deburring Machine



For grinding of built-up welds on switch blades, crossing frogs, stock rails and check rails as well as for deburring rail heads and switches. Optionally also for grooved rails for trams.

Adjustment of grinding disc via ergonomically adjustable hand lever and hand wheels for precise guiding:

- Can be moved by 32 degrees to either side
- Height adjustment
- Set angle
- Side infeed

ITS BENEFITS. YOUR BENEFITS.

High work quality & profitability

- Precise settings
- Particularly large work area
- Check rail guidance to bridge the clearance in the frog point area to ensure linear grinding.
- Greater stability due to double holder of the 4 insulated flange rollers (divided)

User-friendly

- Ergonomic guidance and operation of the machine
- Good view of the grinding area
- Frame can be divided for easier transport

Easy to maintain

- Power transferred via ribbed V-belt



TECHNICAL SPECIFICATIONS

Drive	4-stroke petrol engine	electric motor, 3-phase
Type	HONDA GX 200	400 V, 50 Hz
Output	4.9 kW at 3800 rpm	3 kW at 2880 rpm
Grinding disc		
Outside diameter	260 mm	
Bore x thickness	120 mm x 25 mm	
Max. swivel range	32° in both directions	
Grinding disc speed	3500 rpm	3100 rpm
Dimensions (L x W x H)	2360 x 1200 x 930 mm	
Machine	~87.4 kg	~96.4 kg
Outrigger	~11 kg	~11 kg
Grinding disc	~2.6 kg	~2.6 kg
Total weight	~101 kg	~110 kg

ACCESSORIES

Grinding discs

- 9002000701 dia. 260 mm x 25 mm, holder dia. 120 mm, circumferential speed max. 50 m/s, fabric reinforced for flat bottom rails
- 9002000463 dia. 254 x 40 x dia. 76.2 mm
- 9002000439 dia. 255 x 32 x dia. 25.4 mm

Grinding disc holders

- 8890500001 dia. 254 x 40 x dia. 76.2 mm
- 8890500001 dia. 255 x 32 x dia. 25.4 mm

Flange extension

- 9801361111 Set from 1435 mm to 1600 mm
- 9801361112 Set from 1435 mm to 1520 mm
- 9801361113 Set from 1435 mm to 1674 mm
- 9801361106 Guide frame with guide rollers for gauge reduction from 1435 mm to 900 mm
- 8898980001 Spark safety set for rollers
- 9000100195 Tarpaulin
- 8899910001 Machine centring in switch area

Additional equipment for grinding grooved rails

- 8894150004 Conversion kit for grinding disc dia. 260 x 15 mm
- 8001361007 Roller set (4 off) with flange (when retrofitting)

Grinding disc

- 9002000654 dia. 260 mm x 15 mm, holder dia. 120 mm, circumferential speed max. 50 m/s, fabric reinforced for grooved rails



Grinding disc

14.10 Hydraulic Weld Trimmer

NEW

For easily and quickly removing welding beads from the rail head after thermite welding of rail joints.

The work required is considerably reduced for subsequent grinding. For the shearing process, two shear blades adapted to the rail profile are pressed together by two hydraulic cylinders arranged in parallel. In this way, the projecting weld metal is gripped from two sides and shorn off. As the shear blades are applied from both sides, no tensile forces act on the weld. Thus damage of the weld due to hot cracks are avoided. Optionally hand pump or hydraulic power pack.

ITS BENEFITS. YOUR BENEFITS.

Profitability

- Fast work
- Reduction of follow-on costs
 - due to minimisation of the grinding process
 - avoidance of hot cracks

User-friendly

- Low total weight
- Simple operation



TECHNICAL SPECIFICATIONS

Equipment	with hydraulic power pack
max. operating pressure	580 bar
max. compressive force	200 kN
Max. travel	175 mm
Hydraulic oil	HLP 46 1 l
Dimensions (L x W x H)	780 x 350 x 215 mm
Weight excl. shear blades and hand pump	~37 kg

ACCESSORIES

Shear blade sets

- 8859900001 for FORM B/S49/S54/UIC54E
- 9801410001 for FORM B/UIC60/UIC 54/R50/R65
- 8859900003 for FORM 132 LB

STRESSING PULLING BENDING



STRESSING/PULLING/BENDING

24.70 Hydraulic Rail Stressor

22.28 Switch Blade Lining Device

For the bending of switch blades at switches

A close fit of the switch blade on the stock rail is a condition for a train travelling through the switch with the permitted speed, highest level of safety and as smoothly as possible. The railway switch regulations determine the permissible amount of lining.

- For switch maintenance
- After accidents to enable immediate running of trains until the switch blades are replaced.
- To increase or decrease the radius of the switch gauge in the area of the switch blade.
- For all commonly used flat bottom rails.
- Application for lining and removal possible by one person.
- The unit can be moved easily on the rail.
- The high bending force of 250 kN makes possible all types of bending work on the switch blade.
- Quick-release coupling to connect hand pump or hydraulic power pack.



TECHNICAL SPECIFICATIONS

Drive	Hand pump, two-stage
Operating pressure	max. 700 bar
Compressive force	max. 250 kN
Travel	max. 150 mm
Hydraulic oil	HLP 46 1.3 l
Dimensions (L x W x H)	930 x 125 x 500 mm
Weight	~79 kg

ACCESSORIES

Profile jaws

- 7260601010 for S49/S54, 1 set = 2 pieces
- 7260701010 for uic60, 1 set = 2 pieces
- 7260801010 for R65, 1 set = 2 pieces
- 7260551010 for A, 1 set = 2 pieces
- 7260501010 for BS113A, 1 set = 2 pieces

Other gauges on request.

- 8002228003 Pressure gauge mounting
- 8002228004 Wooden transport and storage box, with lockable lid and carrying handles



Profile jaws for rail section S49/S54



Pressure gauge mounting

22.38 Hydraulic Rail Bender

For bending and lining flat bottom rails up to about 60 kg/m and grooved rails up to about 55 kg/m

- Alloy frame
- Replaceable rail claws
- Servo return of piston
- Easy operation in all work positions



TECHNICAL SPECIFICATIONS

Compressive force	550 kN
Piston travel	100 mm
Dimensions (L x W x H)	880 x 750 x 240 mm
Weight	~69 kg

ACCESSORIES

8002238015 Claws for grooved rails with steel pressure piece

Grooved rail profile blocks

Two profile blocks matching the chosen rail are required

- 8002238006 Distance for RI60
- 8002238016 Distance for RI56
- 8002238017 Distance for NT1
- 8002238018 Distance for NT 3
- 8002238019 Distance for RI59/RI59 N
- 8002238022 Distance for T62



Claw and pressure piece for grooved rail



Grooved rail profile block

24.06 Gauge Bar

For correcting a narrowed or widened gauge

24.06/1 Gauge Bar

- Can be fitted easily to the foot of the rail
- Adjustment via threaded spindle when in place
- Insulated from rail to rail
- For rails with a base width of 125 mm to 150 mm (e.g. S49/54 and UIC 60)
- Gauge 1435 mm



24.06/2 Gauge Bar

- Not insulated from rail to rail
- Mounted by screwing to the two grooved plates



TECHNICAL SPECIFICATIONS

Designation	24.06/1	24.06/2
Dimensions	1850 mm	1350 mm
Weight	~25 kg	~11 kg

24.08 Rail Pulling Shoe

For pulling rails in the ballast

- For S49, S54, UIC 60 rails up to a rail length of 180 m
- Can be used for drilled and undrilled rails
- Does not cause impressions or deformations of the rail



TECHNICAL SPECIFICATIONS

Dimensions (L x W x H)	350 x 195 x 280 mm
Weight	~38 kg

24.12 Hydraulic Rail Pulling and Pushing Device

For pulling together or pushing apart 2 flat bottom rails in longitudinal direction

Standard design:

- 1 hydraulic cylinder, double-acting, with carrying handle
- 2 clamping heads



TECHNICAL SPECIFICATIONS

Max. tensile/compressive force	60 kN/80 kN
Piston travel	400 mm
Max. pressure in hydraulic system	100 bar
Dimensions (L x W x H)	
Clamping head S49	190 x 270 x 550 mm
Distance jaws	170 x 40 x 70 mm
Hydraulic cylinder	950 x 120 x 180 mm
Weight	
Basic unit	~ 77 kg
Hand pump	~ 7.6 kg
Power pack	~ 29 kg

ACCESSORIES

Distance jaws

Each device equipped with 2 x 2 pieces = 1 set

8002412013	set for UIC 60
8002412011	set form B for S49/S54/35.7/35 kg/Np46/As41
8002412012	set form C for UIC54E/UIC54/BS113A/AS53
8002412014	set for R65
8002412017	set for 115lb
8002412018	set for 136lb/132lb
8129900001	set for Bv50/As50
8129900002	set for Bs80a
8129900003	set for 50 kg
8129900004	set for 60 kg

Other distance jaws on request.



Distance jaw set for UIC60

8002412008	Extension 1100 mm for pulling for gaps of over 940 mm and up to 2000 mm
8002412016	Extension 800 mm
8002412010	Hydraulic hand pump including hose set <ul style="list-style-type: none"> • with high-pressure hoses, ~2000 mm long • with quick-release couplings, • max. pressure 100 bar (preset) • hydr. tank volume 1.3 l • precision drain valve
8127500001	Hydraulic system <ul style="list-style-type: none"> Driven by Briggs & Stratton 4-stroke engine, output 2.6 kW at 3000 rpm • Robust double pump, with automatic changeover from low pressure to high pressure stage • 4-way valve with pressure relief valve, fully mounted on unit • 2 connecting hoses with quick-release couplings • Hydraulic tank volume 5 l • Delivery rate 1.8/0.9 l • Max. pressure 100 bar (preset) • Low noise level (73 dBA)

24.70 Hydraulic Rail Stressor



For positioning rails for welding work, with 70 t tensile force

- For stressing, pressing and keeping rails in neutral length during welding
- Due to the obstructionless design, it is possible to drive over it when fitted.
- Tension yokes in box construction and alloy hydraulic cylinders make it possible that the heaviest equipment part weighs only 33 kg.
- Fast installation without tools
- The tension yokes can also be arranged over the rail, e.g. in case of slab track.
- On request, parallel operation on both rails is possible.

ITS BENEFITS. YOUR BENEFITS.

Fast and easy installation and dismantling

Obstructionless installation

Safe working due to

- simple handling
- light-weight components and centring blocks
- no need for lifting gear which is normally required

Version for use in 3rd rail area available

The unit consists of the following assemblies:

- 2 yokes with 2 clamping devices each
- 2 hydraulic cylinders
- 2 draw bars
- 1 hydraulic pump, depending on order hydraulic hand pump/ hydraulic power pack; with hoses and couplers

Hydraulic hand pump

- Two-stage pump with automatic changeover from low-pressure (fast feed) to high-pressure range.

Hydraulic power pack

- Drive by means of 4-stroke petrol engine
- Compact unit with two-stage pump, automatic changeover from low-pressure (fast feed) to high-pressure range.

NEW



TECHNICAL SPECIFICATIONS

	24.70 Standard	24.70 3 rd Rail
Tensile force	700 kN	
Compressive force	400 kN	
Travel	380 mm	
Operation as per order	with hydraulic hand pump with hydraulic power pack	
Basic unit	~198 kg	~280 kg
Hydraulic hand pump	~55 kg	
Hydraulic power pack	~67 kg	
Heaviest individual component	~33 kg	~33 kg/~49 kg
Dimensions (L x W x H) in installed condition	2650 x 1020 x 375 mm	2650 x 110 x 375 mm

ACCESSORIES

Rail supports for obstructionless use

8747900008	for UIC60/S49 for UIC60/S49
8740450001	for S48U/UIC54
8740460001	for NP46/UIC54/BS80A
8747900004	for 140RE/136RE/90RE
8747900005	for 113A/115RE/119RE/132RE
8747900006	for U50/U36
8747900007	for S33/UIC 54
8747900009	for NSB 40 kg

8740310001 Draw bar 600 m long, it is recommended that 2 of these are ordered.

8002470008 Draw bar 1.52 m, draw bar, straight, 1.5 m long with locking bolts (2 included in standard equipment)

8749910001 Piston rod guard using leather cuffs. Consisting of two cuffs.

8743050005 Pressure intensifier



Trolley for hydraulic unit



Toolbox



Rail supports for obstructionless use



Piston rod guard



Hydraulic hand pump



Draw bar 1.52 m

25.16 Rail Carrying Roller

For moving long-welded rails

Robust steel design with maintenance-free ball bearings



TECHNICAL SPECIFICATIONS

Max. load	700 kg
Inside roller dimension	170 mm
Dimensions (L x W x H)	260 x 130 x 120 mm
Weight	~7.3 kg

26.01 Rail De-Stressing Machine

To remove stresses from the rail by striking the rail head sides. The vibrations generated in this way destress the rail.

After removing the fasteners and fishplates, the rails should take up the length which corresponds to the current rail temperature. The machine works on both rails of the track simultaneously with two hammers. This removes stresses existing in the rail. At the same time, non-rail elements, such as rail pads, are loosened.

ITS BENEFITS. YOUR BENEFITS.

Precise & powerful due to

- Height-adjustable hammers which make it possible to set the contact point precisely
- Number of impacts continuously adjustable via gas activation: 45-60 impacts/min

User-friendly due to

- LED lighting on both sides which perfectly illuminates the work area
- Can be operated in both directions



Safe due to

- Easily lockable guard over hammer unit
- Engine can be started only if the guard is in place
- Dead man's brake on both sides
- Emergency stop push-button

Low maintenance requirement due to

- Centrifugal clutch

TECHNICAL SPECIFICATIONS

Air-cooled four-stroke engine	HONDA GX200
Output	at 3600 rpm 4.8 kW
Dimensions (L x W x H)	2660 x 1240 x 970 mm
Track gauge	1435 mm
Weight	~250 kg
Number of impacts	continuously adjustable via gas activation, 45 - 60 impacts per rail at an engine speed of 3000 - 3600 rpm

66.01 Rail Heater



To achieve the required rail temperature by introducing heat into the rail with the burner equipment for thermite welding. A version with dead man's brake is available.

ITS BENEFITS. YOUR BENEFITS.

Profitability

- High and fast transfer of energy
- Low work effort to neutralise the rail by expanding the material compared to drawing the rail.

Flexibility

- Height adjustment of burner to control the heat transfer
- Low space requirement during transport and storage
- Cross members for parallel working of two units on both rails (see Accessories)

User-friendly

- Folding handles
- Burner unit can be divided

TECHNICAL SPECIFICATIONS

Dimensions (L x W x H)	2300 x 590 x 880 mm
Weight incl. outrigger	~78 kg

ACCESSORIES

Cross members to connect two units

- 8668980001 gauge 1000 mm
- 8668980002 gauge 1435 mm



WRENCHING CLIPPING



30.20 Battery Powered Impact Wrench

30.09 Portable Impact Wrench

For tightening and loosening nuts and sleeper bolts. With 2-stroke engine which drives the impact wrench mechanism via a centrifugal clutch, a reduction and reversing gearbox.

- Stable, robust design
- Easy operation in all work positions
- No transfer of wrenching moment to operator
- 1 inch square drive to accept the corresponding sockets
- Rotates left/right
- Vibration-damped handles



TECHNICAL SPECIFICATIONS

Drive	air-cooled 2-stroke petrol engine
Type	Dolmar HP 6400
Power	3.5 kW (4.8 hp)
Torque	up to 2000 Nm, depending on joint hardness
Dimensions (L x W x H)	670 x 450 x 300 mm
Weight	~23 kg
Weight of a socket	~1.5 kg

ACCESSORIES

SOCKETS

Hexagonal:

8003008004	internal hex A/F 22
9002501208	A/F 27
9871033313	A/F 30
9871033309	hex 32
9002501223	A/F 34
9871033314	A/F 35
9871033311	A/F 36
9871033315	A/F 38
8098950100	A/F 39 Special 230 mm
9871033391	A/F 39 hex
9871033304	A/F 41 hex
9871033308	hex 42
9002501224	A/F 46

Rectangular:

9871033317	rect. 18 x 26
9871033316	rect. 20 x 30
8003008006	rect. 20.5 x 24.5
9871033302	rect. 21 x 28
9871033305	rect. 30 x 22

Square:

9871033303	sq. 19x19/17x17
987103318	sq. 21 x 21
9871033306	sq. 22 x 22
9871033319	Socket, sq. 24 x 24

Other sockets can be found on page 61.



Socket, rect. 24 x 28 for rectangular, socket A/F 39 for hexagonal



SDS Plus chuck adapter

8099910001 SDS-Plus chuck adapter, to drill holes in sleepers

Sleeper drill bits

Max. drilling depth 150 mm with SDS-Plus chuck adapter

9002501808	dia. 14 mm
9002501809	dia. 16 mm
9002501810	dia. 18 mm
9002501811	dia. 20 mm
9002501812	dia. 22 mm

8003009006	Extension bar 180 mm/1" mounting
8003009005	Extension bar 330 mm/1" mounting
8003009007	Cardan joint 1" mounting
9909992145	O-ring, circlip to secure socket
9900070056	Dowel pin to secure socket
8003009008	Transport and storage box

30.10 Portable Impact Wrench

For tightening and loosening nuts and sleeper bolts.

- Compact machine for all fast site tasks
- Can be used horizontally and vertically
- Ergonomically optimised design
- Robust 2-stroke petrol engine
- Centrifugal clutch and change gear
- Vibration-damped operating handles
- 1 inch square drive to accept the corresponding sockets



TECHNICAL SPECIFICATIONS

	30.10 Standard	30.10 Low Vibration
Drive	air-cooled 2-stroke petrol engine	air-cooled 2-stroke petrol engine
Type	w/o damping	with damping
Output	1.7 kW at 7120 rpm	1.7 kW at 7120 rpm
Max. torque	1800 Nm, depending on joint hardness	1800 Nm, depending on joint hardness
Dimensions (L x W x H)	650 x 382 x 273 mm	700 x 390 x 330 mm
Socket weight	~1.5 kg	~1.5 kg
Total weight	~19.5 kg	~21.3 kg

NEW

ACCESSORIES

Sockets

Hexagonal:

8003008004	internal hex A/F 22
9002501208	A/F 27
9871033313	A/F 30
9871033309	hex 32
9002501223	A/F 34
9871033314	A/F 35
9871033311	A/F 36
9871033315	A/F 38
8098950100	A/F 39 Special 230 mm
9871033391	A/F 39 hex
9871033304	A/F 41 hex
9871033308	hex 42
9002501224	A/F 46

Rectangular:

9871033317	rect. 18 x 26
9871033316	rect. 20 x 30
8003008006	rect. 20.5 x 24.5
9871033302	rect. 21 x 28
9871033305	rect. 30 x 22

Square:

9871033303	sq. 19 x 19/17 x 17
9871033318	sq. 21 x 21
9871033306	sq. 22 x 22
9871033319	Socket, sq. 24 x 24

Other sockets can be found on page 61.



Socket, rect. 24 x 28 for rectangular, socket A/F 39 for hexagonal



SDS Plus chuck adapter

8099910001 SDS-Plus chuck adapter, to drill holes in sleepers

Sleeper drill bits

Max. drilling depth 150 mm with SDS-Plus chuck adapter

9002501808	dia. 14 mm
9002501809	dia. 16 mm
9002501810	dia. 18 mm
9002501811	dia. 20 mm
9002501812	dia. 22 mm

8003009006	Extension bar 180 mm/1" mounting
8003009005	Extension bar 330 mm/1" mounting
8003009007	Cardan joint 1" mounting
9909992145	O-ring, circlip to secure socket
9900070055	Dowel pin to secure socket
8003010003	Transport and storage box

30.20 Battery Powered Impact Wrench



For all wrenching tasks arising in track construction

The battery technology by ROBEL.

- Up to 25 % time saving
- Powerful rechargeable batteries and reliable mechanics provide for clean, quiet and powerful working when constructing and maintaining railway systems.
- Low maintenance requirements and extremely efficient!

ITS BENEFITS. YOUR BENEFITS.

Powerful due to high torque (1800 Nm). 500 wrenching cycles possible under optimum conditions.

1. Zero emissions & clean

- Zero emissions
- No unpleasant odours and no dirt

2. Quiet & ergonomic

- Low noise and vibration

3. Safe & simple

- Easy and safe handling

4. Compact & practical

- LED light improves visibility
- No faults from „petrol/oil mixtures“

5. Maintenance-free & cost-efficient

- Motor and battery do not require maintenance
- No cable required
- Machine can be used immediately
- Fast wrenching cycles
- Rechargeable battery - return on investment due to fuel price
- Battery packs, charger and machine can be combined as required (10.20 and 30.20).
- Standard ROBEL accessories can be used.





TECHNICAL SPECIFICATIONS

Dimensions (L x W x H)	780 x 500 x 215 mm
Max. torque	1800 Nm
Number of impact cycles/charge	about 500
Power adjustable	(50/75/100%)
Handle	adjustable (height + angle)
Weight	~ 18.3 kg

ACCESSORIES

780680001 Spare battery
 Dimensions ~325/140/150 mm (L x W x H)
 Weight ~5.6 kg
 Voltage 43 V
 Capacity 12.9 Ah
 Energy content 557 Wh

7806850001 Charger
 Charging period ~4 hours
 Dimensions ~340/200/140 mm (L x W x H)
 Weight ~3.1 kg
 Voltage, primary 90/220 V
 Voltage secondary 44/60 V
 Power 300 W

Sockets

9871033315 A/F 38
 9871033391 A/F 39
 9871033304 A/F 41
 9871033302 rect. 21X28
 9871033318 sq. 21
 9871033319 sq. 24X24

Other sockets can be found on page 61.

8003009006 Extension bar 180 mm/1" mounting
 8003009005 Extension bar 330 mm/1" mounting



**Socket rect. 24 x 28 for rectangular,
 socket A/F 39 for hexagonal**



SDS Plus chuck adapter

8003009007 Cardan joint 1" mounting
 9780890120 Transport and storage box, metal, with lockable lid
 and two carrying handles
 9909992145 O-ring, circlip to secure socket
 9900070056 Dowel pin to secure socket

8099910001 SDS-Plus chuck adapter, to drill holes in sleepers

Sleeper drill bits

with a max. drilling depth of 150 mm and with SDS-Plus chuck

9002501808 dia. 14 mm
 9002501810 dia. 18 mm
 9002501812 dia. 22 mm

Other sleeper drill bits on request.

30.71 Hydraulic Precision Power Wrench

For tightening and loosening sleeper bolts and nuts. The machine meets the requirements for precise, exact tightening torques, in particular for new and high-speed lines (max. 3 % deviation).

- Can be used for any type of track
- Automatic speed changeover
- Fast screwing with low torque and precise control of the final position with high torque.
- Patented hydraulic system
- Only 4 litres of biodegradable oil
- Precise indication of torque, not affected by wear
- Screwing in with adjustable torque
- Unscrewing always with max. torque.



TECHNICAL SPECIFICATIONS

Drive	air-cooled 4-stroke petrol engine	electric motor, 3-phase
Type	Honda GX 200	400 V, 50 Hz
Output	4.9 kW at 3800 rpm	3 kW at 2880 rpm
Spindle speed		
No-load speed	max. 245 rpm	max. 195 rpm
Load speed	35 rpm	28 rpm
Speed control	automatic	
Tightening torque indicator	max. 450 Nm	
Loosening/tightening torque	max. 760 Nm	
Torque accuracy	+/-3%	
Dimensions (L x W x H)	1800 x 580 x 750 mm	
Weight	~101 kg	~114 kg

ACCESSORIES

- 8003182001 Fish Bolt Spanner 31.82, one-sided design; without socket
- 8003182002 Spindle extension for 140 mm length (31.82)
- 8003062052 Socket hex A/F 39 SRAUG

Other sockets can be found on page 61.

Transverse travelling gears

- 8003082015 Four-wheel, gauge 1435 mm, instead of two-wheel monorail trolley with outrigger
- 8003082015 Four-wheel, gauge 1435 mm, extension needed only if transverse travelling gear is ordered and supplied at a later time. When ordering a transverse travelling gear with the power wrench, the extension is already included in the price.
- 8913823020 Spindle extension, 70 mm, output drive, spherical
- 8329900037 Parking brake for transverse travelling gear
- 7426500007 Handle tube with cover strip
- 9000100065 Hood-shaped cover
- 8329910001 Ballast box for transverse travelling gear



30.75 8-Spindle Precision Wrenching Unit



For the simultaneous, fully automatic tightening and loosening of up to 8 rail fastenings in one work step, and for the synchronous tightening of clamping devices

- High synchronous and torque accuracy
- Efficient and precise wrenching mechanism
- High working speed
- Compact aluminium frame with 4 screw shuttles and 8 fully hydraulic screw drives
- Rail tongs to automatically fix the wrenching unit during work
- Display for setting, indicating and checking the torques
- Electronic data logger
- Optimum data storage and evaluation by PC
- Fast and easy working in obstructionless position
- Can be combined with various energy supplies
- Continuous travel of energy supply during wrenching operation, designed as satellite wrenching unit positioned by linear drive
- Wrenching unit with lights
- Remote control

Accessories on request.



TECHNICAL SPECIFICATIONS

Working speed	~600 m/h
Wheel base	1950 mm
Diameter, running wheels	340 mm
Combination with various energy supplies	ROBEL track vehicles or similar <ul style="list-style-type: none"> • excavator with 2-way unit • 2-way vehicle, e.g. Unimog • Integration into work train • Independent machine, self-propelled
Energy requirement	electric 24 V, DC/60 Amps
Hydraulic output required	60 kW
Hydrostatic drive	0 - 1.0 km/h
Weight	~2300 kg

30.82 Universal Power Wrench



For tightening and loosening nuts and sleeper, hook and fishplate bolts.

ITS BENEFITS. YOUR BENEFITS.

Optimum results

- High torque
- Brief increase in torque via shutdown lever, without changing the hydraulic base setting
- Control via torque indicator
- 2-speed helical gear ensures optimum efficiency
- Spindle with crowned square output drive ensures that even angled screw parts are gripped properly

User-friendly

- Compact and light-weight design
- Good visibility due to LED lights (for Honda GX200)
- Safety module for broken wires (for Honda GX200) for safe shut-down and prevention of restarting of engine
- It is possible to work without outrigger due to the extremely low centre of gravity.

Requires little maintenance

- Wear-resistant, self-adjusting metal cone clutch



Applications

Can be used for all wrenching operations for various types of track construction and gauges

TECHNICAL SPECIFICATIONS

Drive	air-cooled 4-stroke petrol engine	electric motor, 3-phase
Type	Honda GX 200	400 V, 50 Hz
Output	4.9 kW at 3800 rpm	3 kW at 2880 rpm
Spindle speed		
No-load speed	max. 245 rpm	max. 195 rpm
Load speed	35 rpm	28 rpm
Automatic speed control		
Tightening torque indicator	max. 450 Nm	
Loosening/tightening torque	max. 760 Nm	
Torque accuracy	+/-3%	
Dimensions (L x W x H)	1800 x 580 x 750 mm	
Weight	~ 101 kg	~ 114 kg

Fish bolt spanner

- 8003182001 31.82 one-sided design; without socket
- 8003062052 Socket, hex A/F 39 SRAUG

Other sockets (also articulated for straight output drive) can be found on page 61.

Transverse travelling gear

- 8320750010 Four-wheel, gauge 1435 mm incl. spindle extension, 70 mm, output drive, spherical
- 8003082015 Four-wheel, gauge 1435 mm, four-wheel, gauge 1435 mm, extension needed only if transverse travelling gear is ordered and supplied at a later time.
- 8003082065 Travelling gear with rubber wheels, instead of travelling gear with outrigger
- 8329900037 Parking brake for transverse travelling gear
- 8329910001 Ballast box (for transverse travelling gear)
- 8328950001 Tool box (only available for Honda GX 200)
- 8869900006 Torque meter 86.12 to calibrate the machine
- 8913823020 Spindle extension, 70 mm, output drive, spherical
- 9000100065 Protective hood (tarpaulin), bright yellow, made of Trevira fabric, PVC coated, hemmed.
With nickel-plated eyelets on both long sides.
Size: 1900 x 600 x 600 mm



Hood-shaped cover



Socket, hex. A/F 39 Sraug

30.82 RKS Universal Power Wrench

For tightening and loosening sleeper, hook and fish-plate bolts

ITS BENEFITS. YOUR BENEFITS.

Optimum results

- High torque
- Electronic control for precise observance of set values
- Precise torque settings via potentiometer on control panel and visual check by operator
- 2-speed gearbox with helical gears for high efficiency
- Wrenching step carried out with push-button. Wrenching stopped automatically, thus highest accuracy and overload protection.
- Electric disc clutch for maximum durability

User-friendly

- Stable wrenching
- Optimum illumination of working area with LED illumination of socket integrated into the gear case
- Quick-change chuck
- Protective engine frame with carrying handles and holder for 2 sockets
- It is possible to work without outrigger due to the extremely low centre of gravity.

Low maintenance requirement

- Due to no-maintenance electronic disc clutch
- Hardly any wear due to articulated sockets and non-friction roll behaviour for angled fasteners

Applications

Can be used for all wrenching operations for various types of track construction and gauges



TECHNICAL SPECIFICATIONS

Drive	air-cooled 4-stroke petrol engine
Type	HONDA GX 200
Output	4.9 kW at 3800 rpm
Spindle speed	
No-load speed	200 rpm
Load speed	70 rpm
Tightening torque indicator	max. 999 Nm
Adjustment range for screwing in	150 Nm to 350 Nm/420 Nm to 999 Nm
Loosening/tightening torque	max. 1000 Nm
Dimensions (L x W x H)	2030 x 600 x 750 mm
Weight without outrigger (outrigger 4 kg)	~92 kg

Transverse travelling gear

- 8050750001 RKS, four-wheel, instead of two-wheel monorail trolley with outrigger, gauge 1435 mm, incl. extension 100 mm square output drive
- 8003082015 Four-wheel, gauge 1435 mm
- 8338950150 Extension, 100 mm, square output drive
Extension needed only if transverse travelling gear is ordered and supplied at a later time. When ordering a transverse travelling gear with the power wrench, the extension is already included in the price.

- 8329900037 Parking brake for transverse travelling gear
- 9000100065 Protective hood (tarpaulin), bright yellow, made of Trevira fabric, PVC coated, hemmed. With nickel-plated eyelets on both long sides. Dimensions: 1900x600x600 mm

Fish bolt spanner

- 8003182001 31.82 one-sided design; without socket
- 8003062052 Socket, hex A/F 39 SRAUG one-sided design; without socket

Other sockets (also articulated for straight output drive) can be found on page 61.



Fish bolt spanner 31.82



Hood-shaped cover



Socket, hex. A/F 39 Sraug

30.83 Combined Power Wrench and Drilling Machine



For all drilling and wrenching tasks that arise in track construction. Especially suitable for dowel renovation.

- Ideal for all fast wrenching tasks on rails, switches and other locations
- Powerful, robust design
- Easy operation in all work positions
- No transfer of wrenching moment to operator
- The machine consists of a 2-stroke engine which drives the impact wrench mechanism via a centrifugal clutch and a reduction and reversing gearbox.
- 1 inch square drive to accept the corresponding sockets
- Rotates left/right
- Vibration-damped handles



TECHNICAL SPECIFICATIONS

Drive	air-cooled 4-stroke petrol engine	electric motor, 3-phase
Type	Honda GX 270	400 V, 50 Hz
Output	6.6 kW at 3600 rpm	4 kW at 2880 rpm
Spindle speed		
No-load speed	175 rpm	145 rpm
Load speed	67 rpm	55 rpm
Max. drill bit diameter	38 mm	
Max. drilling depth	180 mm	
Dimensions (L x W x H)	2100 x 600 x 750 mm	
Weight incl. outrigger	~ 123 kg	~ 139.5 kg

ACCESSORIES

Taper sleeves

- 1) 8913839005 MK2 (chuck) (not shown) for rail drill type 95.02
- 2) 8910839010 MK3 (chuck) (not shown) for rail drill type 95.02
- 3) 8910839015 MK4 (chuck) for rail drill type 95.02
- 8003062052 Socket, hex A/F 39 SRAUG
- 4) 8003083002 Tool holder to hold tools with a square drive

Rail drill bits

- 5) 9002501548 dia. 27 mm MK 3
- 6) 9002501513 dia. 30 mm MK 3
- 7) 9002501519 dia. 38 mm MK 4

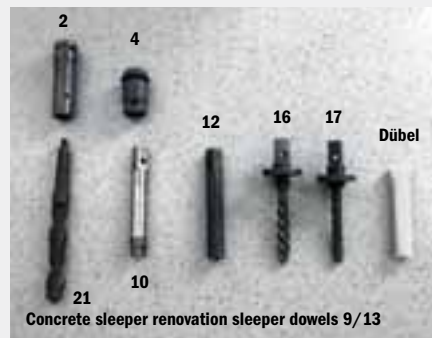
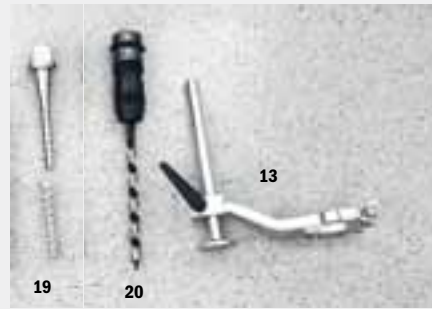
Relief milling cutters

- 8) 9891089217 for wooden sleeper
- 9) 8333550120 RD38 for wooden sleeper or corrugated dowels 1+2
- 10) 8333550110 RD29 for concrete sleeper, sleeper dowels 9+13
- 11) 9891089218 Left-hand extractor for wooden sleeper corrugated dowels 1+2
- 12) 9891089288 Left-hand extractor for concrete sleeper, sleeper dowels 9+13
- 13) 8003083006 Depth stop

- 8329910001 Ballast box (for transverse travelling gear)
 8003182001 Fish Bolt Spanner 31.82, one-sided design;
 without socket
 9002501278 Drill bit dia. 43 mm

- 14) 9891089219 Screw tap for wooden sleeper, sleeper dowel 15
- 15) 9891089220 Countersink for wooden sleeper dowel 15
- 16) 9891089225 Dowel extraction mandrel for concrete sleeper, sleeper dowels 9+13
- 17) 9891089226 Dowel turn-in mandrel for concrete sleeper, sleeper dowels 9+13
- 18) 9891089227 Dowel turn-in mandrel for wooden sleeper, sleeper dowel 15
- 19) 9891085161 Turn-in tool no. 5 (spiral dowel no. 5)
- 20) 8003083003 Adapter with chuck for sleeper drill bit (wood, 96.01)
- 21) 9002501512 Drill bit dia. 29 mm
- 22) 9002501278 Drill bit dia. 43 mm

- 8330750003 Transverse travelling gear 1435 mm
 8329900037 Parking brake



30.90 Servo-controlled bolting technology



For synchronous tightening and loosening for all wrenching tasks required in track construction by the ROBEL Mobile Maintenance Unit

ITS BENEFITS. YOUR BENEFITS.

Precise & efficient

- Data recording with patented wrenching software
- GPS data logger
- Torque repeatability ~3% (independent of joint hardness and rail fastener type)
- High wrenching quality independent of operator



TECHNICAL SPECIFICATIONS

Torque	1000 Nm
Continuous tightening torque	300 Nm
Continuous loosening torque	300 Nm
Spindle speed	~230 rpm
Dimensions (L x W x H) (Spindle application with tool carrier)	1670 x 1300-2055 x 2100-2755 mm
Weight per servo spindle	~65.5 kg

31.82 Fish Bolt Spanner

- For ROBEL 30.82 and 30.82 RKS Universal Power Wrenches
- Single-sided design
- Weight ~8.8 kg



86.12 Torque Meter

- To precisely set and check the torque of power wrenches
- Quick fitting to the quick-change chuck of ROBEL power wrenches
- Drive socket square 3/4 inch
- Reference mark for torque 200 Nm
- Weight ~5 kg



34.01 Clipping Machine



For applying and removing FC type Fastclips. Particularly suitable for sites where a high throughput is required.

- Suitable for Pandrol Fastclip FC clips which are applied and removed in transverse direction to the rail.
- Application and removal using a patented tool
- Changing over from application to removal by quickly and simply turning the tool. No time-consuming changing of the device
- Efficient and precise compact hydraulic system
- Clipping is triggered by a push-button on the handle
- Optimum view of the work position
- Good position of centre of gravity and low weight
- Ergonomically designed, height-adjustable handles
- Transverse travelling gear for gauge 1435 mm

Other gauges on request.

ITS BENEFITS. YOUR BENEFITS.

Cost effective & user friendly due to

- Simple and fast conversion from application to removal (and vice versa) without tools
- Simple and intuitive operation
- Immediate availability without time-consuming adjustments



Applications

The clipping machine can be used on all types of track construction sites, i.e. for new construction, maintenance work as well as dismantling. Even very rusty clips can be removed with the powerful machine. In the version with sleeper lifting unit, even low-lying sleepers can be lifted and then the clips can be applied.

TECHNICAL SPECIFICATIONS

Drive	4-stroke petrol engine	diesel engine	electric motor, 3-phase
Type	HONDA GX 200	Hatz 1B30	400 V, 50 Hz
Output	4.9 kW at 3800 rpm	5.0 kW at 3600 rpm	3 kW at 2880 rpm
Weight, machine	~ 134 kg		
Weight, transverse travelling gear	~ 46 kg		
Dimensions (L x W x H)	1950 x 690 x 1010 mm		
Width, transverse travelling gear	2100 mm		

Available Fastclip tools

VERSION 1

Clip application

- 8254220001 Clip 125
- 8254220002 Clip 135
- 8254220007 Wide Clip 125
- 8254220008 Wide Clip 135

Clip removal

- 8254220019 Standard
- 8254220013 Without stop
- 8254220009 Simple design, smooth
- 8254220004 With nose
- 8254220003 Removal disc, general
- 8254220010 Removal disc, wide, general

VERSION 3

Clip application

- 8254220011 Clip 135
- 8254220012 Clip 125

Clip removal

- 8254220019 Standard
- 8254220013 Without stop
- 8254220009 Smooth

- 8259900008 Transverse travelling gear. Please request info for gauges other than 1435 mm.
- 8259910005 Parking brake for transverse travelling gear
- 9000100065 Hood-shaped cover

Converter for clips of different length (from 125 mm to 135 mm and vice versa)

Insertion tool for all types of application

- 8254220180 125 clip with lifting point for sleeper lifting
- 8254220170 135 clip with lifting point for sleeper lifting
- 8254220100 125 clip without sleeper lifting
- 8254220120 135 clip without sleeper lifting



Hood-shaped cover

34.02 Hydraulic Clipping Machine

For applying and removing clip fastenings in modular and ergonomic design. The Power Pack (electric, petrol or diesel) is combined with the required working module (Fast-Clip with sleeper lifting unit, E-Clip, traction loco).

The modular hydraulic series by ROBEL.

ITS BENEFITS. YOUR BENEFITS.

Cost effective

- Easy and quick changeover from application to removal tool increases the throughput.
- High quality tools reduce damage to fasteners, including insulators.
- Versatile due to modular design
- Return on investment due to increased machine availability

Ergonomic & safe

- Safe operation due to protective functions, such as 2-hand operation and dead man's brake
- Simple to load due to defined anchor points for manipulating modules and Power Packs
- Ergonomic working due to balanced load distribution and low hand/arm vibrations

MODULAR POWER PACK SERIES

Providing the working module with energy

- Electric motor, petrol or diesel engine
- Various Power Pack outputs
- Fast and simple combination of Power Packs with any available working module
- Universal use due to versatile hydraulic and electric connections
- (200 bar, 12 V, 5 A, ...).
- Easy transport and the stackability of several Power Packs is a bonus for storage.
- Oil filter and filter maintenance indicator

MODULAR WORKING MODULES

Modular Clipping

- Various types of fastener
- Quick and easy combination of working module with any available medium size Power Pack
- Simple operation in automatic or manual mode
- Clear view of the work area, also at night due to LED light
- Safe operation due to 2-hand protective circuit and sturdy guard
- Clipping is triggered by a push-button on the handle

Modular wrenching

- Insertion of the SKL spring clip which is then screwed down
- Quick and easy combination of working module with any available large size Power Pack (Honda GX390 and 7.5 kW E)
- Simple operation in automatic or manual mode
- The working mode is triggered by a push-button on the handle
- Safe operation due to 2-hand protective circuit and sturdy guard
- Clear view of the work area, also at night due to LED light



NEW



TECHNICAL SPECIFICATIONS

POWER PACKS

Drive	Honda GX200	Honda GX270	Hatz 1B30	Hatz 1B30
Type	petrol	petrol	diesel	diesel E-Start
Output	4.9 kW at 3800 rpm	6.6 kW at 3800 rpm	5.4 kW at 3600 rpm	5.4 kW at 3600 rpm
Pressure	200 bar			
Weight	~67 kg	~78 kg	~85 kg	~88 kg
Dimensions (L x W x H)	960/620/570 mm			

CLIPPING & WRENCHING WORKING MODULES

Type	Fast-Clip	e-Clip	FE-Clip	2 spindles with spring clip insertion
Weight	~102 kg	~200 kg	~110 kg	~112 kg
Dimensions (L x W x H)	1700 x 10500 x 590 mm			

ACCESSORIES

Transverse travelling gear

8259900008 for gauge 1435 mm

7421300008 for gauge 1435 mm incl. a mechanical brake
The brake is released by inserting a pin connected to the clipping machine.

5079900002 for gauge 1435 mm incl. a mechanical brake
The brake is released by pressing a handle on the clipping machine.

Gauges other than 1435 mm on request.



34.90 Clipping Devices for Pandrol Fastclip

SLEEPER LIFTING UNIT

To manually lift sleepers



TECHNICAL SPECIFICATIONS

Length	1000 mm
Weight	~8 kg

EXTRACTION TOOL

To manually extract Pandrol Fastclips



TECHNICAL SPECIFICATIONS

Length	1000 mm
Weight	~8 kg

INSERTION TOOL

To manually insert Pandrol Fastclips



TECHNICAL SPECIFICATIONS

Length	1100 mm
Weight	~10 kg

35.01 Fish Bolt Spanner

Ratchet spanner for clockwise and counter-clockwise rotation of flat fish-plates, for hexagon nuts, A/F 39, with 2 lever arms.

- Without inserts, for flat fish-plates; hexagon nut A/F 39 mm
- With inserts for angle fish-plates and flat fish-plates; hexagon nuts A/F 39 mm and other dimensions



TECHNICAL SPECIFICATIONS

Length	730 mm
Weight	~6.3 kg

ACCESSORIES

Spanner inserts

For use with angle fish-plates (2 nos. are required)

9891040135	A/F 32
9891040137	A/F 33
9891040139	A/F 34
8910440145	A/F 36

9891040147	A/F 38
8910440151	A/F 39
9891040155	A/F 42
9891040161	A/F 45
9891040163	A/F 46



Insert A/F 39

35.02 Fish Bolt Spanner

For use with fish-plates and for general wrenching work

Light-weight, robust & flexible

- Ratchet spanner in partial aluminium construction
- Sturdy coarse ratchet
- Inserts reversible for left-hand/right-hand rotation
- Locking with ball stop



TECHNICAL SPECIFICATIONS

Length	730 mm
Weight	~6.3 kg

ACCESSORIES

Sockets

9002501704	A/F 36
9002501703	A/F 38
9803502002	A/F 39

9002501694 A/F 41

Other sockets can be found on page 61.



Socket A/F 36

36.01/02/03 Socket Wrench

36.01 for sleeper bolts
(square head DIN 5913, A/F 17 x 17/19 x 19 mm)

36.02 for sleeper bolts
(rectangular head DIN 5914, A/F 19 x 26/21 x 28 mm)

36.03 for nuts
(hex head, e.g. DIN 3129, A/F 33 or 39 mm)

A/F = width of nuts or sockets across flats

Please contact our expert staff for other types of socket wrench.



TECHNICAL SPECIFICATIONS

	Height	Width	Weight
36.01	980 mm	750 mm	~6.5 kg
36.02	980 mm	750 mm	~8.5 kg
36.03	980 mm	750 mm	~7.4 kg

38.01 Support Lever

The support lever is an installation aid which prevents plastic dowels from being raised from their installation positions while the sleeper bolt is removed for the required maintenance work.

38.01 Support lever for rail type S49/54

38.01 Support lever for rail type UIC60



TECHNICAL SPECIFICATIONS

	Length	Width	Height	Weight
UIC60	~1500 mm	200 mm	90 mm	~5.2 kg
S49/54	~1500 mm	170 mm	90 mm	~5.2 kg

Sockets, one-piece

in standard dimensions

For ROBEL power wrenches 30.71 and 30.82
(with spherical wrenching spindle seat)

Hexagonal, one-piece, e.g. "K" permanent way, with nut ejector

8003082039	Socket, hex SW 35 with ejector
8003082075	Socket, hex SW 36 with ejector
8003082038	Socket, hex SW 38 with ejector
8003082036	Socket, hex SW 39 with ejector
8003082074	Socket, hex SW 40 with ejector
8003082071	Socket, hex SW 41 with ejector

Rectangular, one-piece, e.g. "W" permanent way, without ejector

9871033020	Socket, rect. 30 x 20
9871033022	Socket, rect. 30 x 22
9871033072	Socket, rect. 24.5 x 20.5
9871033070	Socket, rect. 28 x 21
9871032618	Socket, rect. 26 x 18

Square, one-piece, without ejector

9871033080	Socket, sq. 19 x 19
9871033200	Socket, sq. 21 x 21
9871032123	Socket, sq. 23 x 23
9871032200	Socket, sq. 22 x 22
9871032400	Socket, sq. 24 x 24
9871032540	Socket, sq. 25.4 x 25.4 (1")
8710302118	Socket, sq. 1 1/8" octagonal
9871032427	Socket, sq. 27 x 27

For fish bolt spanner 31.82

Wrenching part seat hex 40, complete with ejector, compression spring, O-ring and cylindrical pin.

8003062016	Socket, hex SW 36 SRAUG
8003062062	Socket, hex SW 38 SRAUG
8003062052	Socket, hex SW 39 SRAUG
8003062060	Socket, hex SW 40 SRAUG
8003062058	Socket, hex SW 41 SRAUG
8003062065	Socket, hex SW 42 SRAUG
8003062072	Socket, hex SW 46 SRAUG
8003062073	Socket, octagonal 1 11/16" octagonal



Socket, hex. A/F 35 with ejector



Socket, rect. 30 x 20



Socket, hex. A/F 39 Sraug

Sockets, articulated

Complete with driving head, wrenching part, compression spring, O-ring and cylindrical pin.

For ROBEL power wrenches 30.42, 30.74, 30.83 and 30.82 RKS
(with straight wrenching spindle seat)

Hexagonal articulated, with nut ejector

8003062054	Socket, hex SW 30
8003062064	Socket, hex SW 32
8003062014	Socket, hex SW 33
8003062033	Socket, hex SW 34
9891368034	Socket, hex SW 35
8003062055	Socket, hex SW 36
8003062049	Socket, hex SW 38
8003062001	Socket, hex SW 39
8003062051	Socket, hex SW 40
8003062017	Socket, hex SW 41
8003062039	Socket, hex SW 42
8003062008	Socket, hex SW 44
8003062056	Socket, hex SW 46

Rectangular articulated, without ejector

8003062059	Socket, rect. 26 x 18
8003062047	Socket, rect. 24 x 20
8003062070	Socket, rect. 24.5 x 20.5
8003062005	Socket, rect. 28 x 21
8003062048	Socket, rect. 30 x 22
8003062046	Socket, rect. 30 x 20

Square articulated, without ejector

8003062043	Socket, sq. 18 x 18
8003062004	Socket, sq. 19 x 19
8003062044	Socket, sq. 24 x 24
8003062040	Socket, sq. 23 x 23
8003062061	Socket, sq. 22 x 22
8003062063	Socket, sq. 32 x 32



Socket, hex. A/F 39



Socket, rect. 26 x 18



Socket, sq. 24 x 24

LIFTING LOADING TRANSPORTING



47.230 Hydraulic Track Lifting Machine with Slewing Device

40.05 Rail Lifting Device



For lifting and fixing rails, e.g. S49, S54 and UIC60, via hand lever

- To be used for replacing rail pads and grooved base plates
- For all types of track used by DB
- For other special types of track upon request
- Hand lever equipped with above-dead-centre safety device

TECHNICAL SPECIFICATIONS

Max. load	750 kg
Lifting height	4 different heights adjustable 2 heights for grooved plate support, 2 heights for sleeper support
Dimensions (L x W x H)	12000 x 3800 x 75 mm
Weight	~ 14 kg

RAIL AND SLEEPER CARRYING TONGS

For lifting rails

42.02 Rail Carrying Tongs

For carrying rails



TECHNICAL SPECIFICATIONS

Width up to	80 mm
Height up to	70 mm
Dimensions (L x W x H)	10500 x 700 x 400 mm
Weight	~ 7.5 kg

42.10 Rail Carrying Roller Tongs with Locking Bolt

For lifting and transporting rails

- Rail Mover 43.02, 4 carrying rollers
- For excavator operation with suspension eye, 6 carrying rollers



TECHNICAL SPECIFICATIONS

Perm. carrying capacity	1.5 t
Suitable for	flat bottom rail
Dimensions (L x W x H)	2700 x 1650 x 300 mm
Weight	~16.7 kg

42.11 Rail Carrying Tongs with Safety Latch

For lifting and transporting rails

- For Rail Loaders 40.44 and 40.51



TECHNICAL SPECIFICATIONS

Perm. carrying capacity	1.5 t
Suitable for	flat bottom rail
Dimensions (L x W x H)	1000 x 1650 x 300 mm
Weight	~5.4 kg

42.22 Rail Carrying Tongs with Suspension Eye (crane hook securing) and Locking Device

- with suspension eye (crane hook securing) and locking device,
 - sturdy design
 - with 3 lifting claws
 - Carrying capacity 3 t
- for grooved rails RI 60, RI 55, VKRI 60, RIIR
- for thick web rail/conductor rail D180/105 (up to 130 mm head width)
- for cranes of Track Vehicles 54.17, 54.22
- Opens automatically when touching down on rail head



TECHNICAL SPECIFICATIONS

Perm. carrying capacity	3 t
Suitable for	3 designs possible: flat bottom rail, grooved rail, thick web rail
Dimensions (L x W x H)	1200 x 1300 x 400 mm
Weight	~10.9 - 12.8 kg

43.02 Rail Mover

For lifting and moving rails of any length longitudinally and laterally when used with an appropriate number of devices. Recommended distance between devices approx. 10 m.

- Consists of 2 supports, 1 cross beam, 1 travelling crab and 1 pair of roller carrying tongs
- Support with holes for adjusting height of cross beam by locking pin, with fold-down carrying handles, wooden feet and running rollers
- Easy to dismantle for transport to and from the work site
- ROBEL 41.04 Travelling Crab with rack and pinion thread, safety crank and load pressure brake, ROBEL 42.10 Roller Carrying Tongs self-clamping, with hardened running rollers for moving rails longitudinally



TECHNICAL SPECIFICATIONS

Lifting capacity	1.5 t			
Vertical travel	800 mm			
Running distance of travelling crab	1900 mm			
Support width	2240 mm			
max. head width of rail	75 mm			
max. head height of rail	45 mm			
Designation	ROBEL 41.04 Travelling crab with rack and pinion and hook	42.10 Roller Carrying Tongs	Cross beam	Support
Dimensions (L x W x H)	11500 x 3600 x 310 mm	3500 x 2700 x 165 mm	24500 x 2100 x 130 mm	11800 x 7000 x 130 mm
Weight	~24kg	~16kg	~45kg	~16 kg

ACCESSORIES

8379910001 Extension 325 mm



43.03 Rail Mover

For lifting and moving rails longitudinally and laterally

- Compact device in light-weight construction, standard design in aluminium
- Particularly suited for the safe, quick and efficient moving of fitted pieces, e.g. in case of fractured rails, for insulated joints, etc.
- Consists of 2 supports, 1 cross beam, 1 travelling crab with hydraulic lifting device
- The device can be dismantled for transport and can be re-assembled easily and quickly as required



TECHNICAL SPECIFICATIONS

Lifting capacity max.	500 kg
Vertical travel	350 mm
Running distance of travelling crab	900 mm
Support width	1350 mm
Max. head width of rail similar to rail type UIC60 head width	75 mm
Max. head height of rail similar to rail type UIC60 head height	45 mm
Dimensions (L x W x H)	16500 x 7500 x 1400 mm
Weight basic device	~27 kg

ACCESSORIES

- 8428420012 Rail Carrying Roller Tongs ROBEL 42.10 Compact
In specially low construction; aluminium design, with suspension pin; self-clamping with hardened running rollers
- Roller distance 150 mm
 - For moving rails longitudinally
 - Permitted carrying capacity 0.5 t
- 8378100001 Cross member, when using 2 sets of rail carrying roller tongs. For picking up fitted pieces (e.g. insulated joint); length of cross member 1,150 mm



43.25 Hydraulic Rail Lifting Advice

For lifting previously loosened rails to replace rail pads.

- Integrated dead man's brake
- Operating handle can be swivel- and height-adjusted
- 4 lifting lugs
- Emergency stop button
- Guard plate on gripping tongs
- Hand pump (in case of loss of pressure)



TECHNICAL SPECIFICATIONS

Max. compressive force	200 bar
Dimensions (L x W x H)	19000 x 6950 x 1025 mm
Height above top of rail	925 mm
Gauge	1435 mm
Weight	~250 kg

43.32 Rail Threader



For continuous gradual positioning of rails to the desired track gauge. Hydraulic rail tongs grip the rail heads, hold them securely, preventing turning or tilting, and move the rails outward or inward.

ITS BENEFITS. YOUR BENEFITS.

Profitability

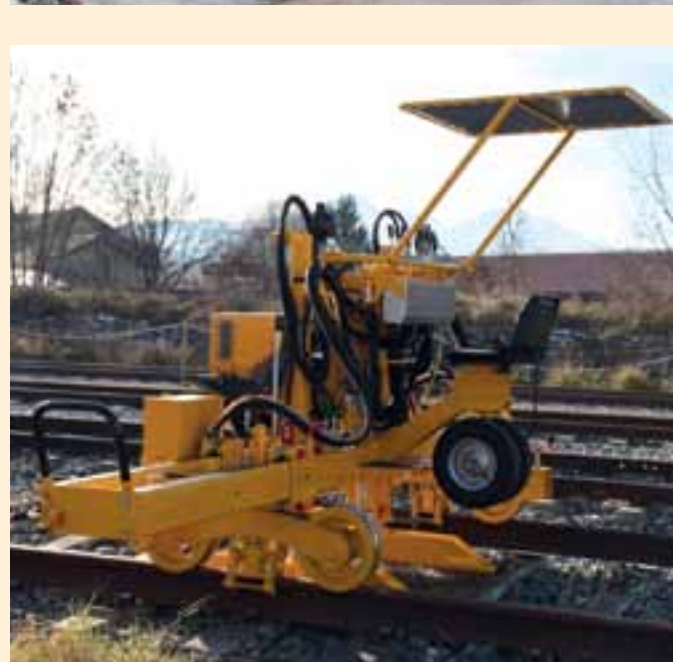
- High performance, especially for long rails
- Automatic adjustment to the track gauge during travel
- Ready for use straight away
 - For travel to and from the work site the carrier frame is slewed into the permitted wagon profile by means of the rotatable travelling gear.
 - Auxiliary rubber wheels for turning as well as rerailing and unrailling at level crossings

Wide range of use

- Hydraulic cylinders can be mounted on the inside or outside, enabling work on track gauges up to 830 mm
- With the use of a pressure booster various hydraulically operated tools can be utilised. (Saving a hydraulic unit)

User-friendly and safe

- High occupational safety due to engine stop and rail tongs protected from turning or tilting
- Roof protects from adverse weather
- LED working lights for good visibility



TECHNICAL SPECIFICATIONS

Drive	air-cooled 4-stroke diesel engine
Type	HATZ 1 D81 „Silent Pac“
Output	7.2 kW at 2,000 rpm
Fuel tank capacity	10 l
Hydraulic system operating pressure	50/160 bar
Hydraulic oil reservoir	35 l
Electrical system battery	12 V, 60 Ah
Lifting capacity	6 t
Vertical travel max.	800 mm
Outward expansion force	30 kN
Inward expansion force	15 kN
Gauge	830 – 3530 mm
Wheel base	800 mm
Wheel diameter double wheel flanges	300 mm
Max. travelling speed	13 km/h
Max. negotiable gradient	25 ‰
Dimensions (L x W x H)	1700 x 4100 x 1800 mm
Weight without auxiliary equipment	~1.5 t

ACCESSORIES

- 9891041960 Hood-shaped cover of strong, fabric-reinforced PVC sheet
- 8437790001 Hydraulic connection for secondary equipment, e.g. for ROBEL 24.12 Rail Pulling and Pushing Device
- 8431920010 Holders incl. hose set
- 8002412019 Clamping head and cylinder for pulling rails



44.17 Wooden Sleeper Carrying Tong

For manual lifting of sleepers. Heavy duty DB design made of steel.

Heavy duty DB design in steel.



TECHNICAL SPECIFICATIONS

Width up to	270 mm
Height up to	165 mm
Dimensions (L x W x H)	1000 x 60 x 450 mm
Weight	~5.5 kg

44.20 Concrete Sleeper Carrying Tongs

For manual lifting of sleepers. Forged steel, with gripper angles welded on.

Heavy duty DB design in steel.



TECHNICAL SPECIFICATIONS

Width up to	280 mm
Height up to	205 mm
Dimensions (L x W x H)	1050 x 100 x 630 mm
Weight	~ 10 kg

46.43/46.45/46.47/46.50 Ratchet Track Jack with Safety Crank Handle

For lifting and lowering loads, e.g. track panels, rails etc. Compliant with Accident Prevention Guidelines for Winches, Lifting and Pulling Devices, BGV D8 (EN 45000).

- Solid, rugged design with large reinforced foot plate
- Safety crank handle with load pressure brake and foldable handle



TECHNICAL SPECIFICATIONS

Designation	46.43	46.45	46.47	46.50
max. lifting capacity	3 t	5 t	7.5 t	10 t
max. lifting height	340 mm	300 mm	300 mm	300 mm
Partial lift per ratchet	0.8 mm	0.4 mm	0.4 mm	0.3 mm
Lift per crank handle turn	8 mm	4 mm	4 mm	4 mm
Excavation height	65 mm	65 mm	65 mm	80 mm
Dimensions (L x W x H)	2900 x 2200 x 715 mm	2900 x 2300 x 720 mm	2900 x 2300 x 720 mm	3350 x 2600 x 790 mm
Weight	~24.5 kg	~29.5 kg	~34 kg	~46 kg

47.14 Mechanical Track Jack

For continuously adjustable and precise lifting of rails

- Quick lifting without load using the crank wrench
- Lifting loads via T-bar socket wrench



TECHNICAL SPECIFICATIONS

Max. lifting capacity	7.5 t
Max. lifting height	150 mm
Excavation height	70 mm
Dimensions (L x W x H) without lever	5200 x 2000 x 255 mm
Weight	~ 15.5 kg

47.17 Hydraulical Track Jack

For vertical lifting and setting down a rail piece

- Consists of base plate, piston with cylinder, pump and oil reservoir
- Robust and particularly compact design
- Easy to use thanks to detachable hand lever
- Quick-action lowering device
- Lifting cylinder equipped with lifting nose as well as structured lifting area at the head



TECHNICAL SPECIFICATIONS

Max. lifting capacity	6.5 t
Max. lifting height	80 mm
Excavation height	45 mm
Dimensions (L x W x H) without lever	2900 x 1800 x 175 mm
Weight	~ 17 kg

47.230 Hydraulic Track Lifting Machine with Slewing Device

For lifting, lining and slewing tracks or entire track panels

ITS BENEFITS. YOUR BENEFITS.

Safe & efficient

- High lifting capacity of 20 t and slewing force of 4.25 t
- Rail tongs lift rail horizontally, no tilting of machine and thus no lateral forces

Long service life & high availability

- Hydrostatic drive with protected and reinforced cardan shaft fixing
- 20 l tank capacity doubles working range
- Flexible push-fit rubber wheels enable turning and unrailling at level crossings

Applications

- During lifting work on switches
- During tamping the track
- For insulated joint maintenance
- For lifting rails to replace rail pads
- For lifting and slewing entire track panels



TECHNICAL SPECIFICATIONS

Engine	air-cooled single-cylinder 4-stroke diesel engine; special sound-insulated design „Silent Pac“
Output	at 2000 rpm 7.2 kW (9.8 hp)
Fuel tank capacity	10 l
Performance	
Lifting capacity	at 150 bar 200 kN (20 t)
Lifting height	continuously adjustable 0 to 900 mm
Slewing force	at 150 bar 42.5 kN (4.25 t)
Slewing range	continuously adjustable 0 to 230 mm
Gauge	1435 mm
Self-propelled speed	continuously adjustable, forward and backward 0 to 13 km/h
Dimensions (L x W x H)	17000 x 31200 x 1950 mm
Weight (without auxiliary equipment)	~1450 kg
Upon request for additional charge	different track gauges, roof, tarpaulin and much more

ACCESSORIES

- 9000100064 Hood-shaped cover
- 8475520024 Driver's seat with heated seat

51.12 Light Track Trolley

For transporting material, equipment and tools on rail tracks. A large number of variations for different track gauges available with additional equipment.

- Light-weight, sturdy vehicle with a platform made of perforated aluminium plates with a non-slip surface
- No accumulation of water or dirt
- Ball bearing synthetic running wheels/optionally sheet steel jacketed
- Carrying handles on the sides
- Parking brake acting on two wheels

Various designs upon request.



Version EDP No.: 9080 511 2500

TECHNICAL SPECIFICATIONS

Aluminium design	
Permitted carrying capacity	700 kg
Gauge	1435 mm
Running wheel diameter	90 mm
Dimensions (platform)	8000 x 1620 mm
Weight	~26 kg (~28 kg with steel jacketed running rollers)

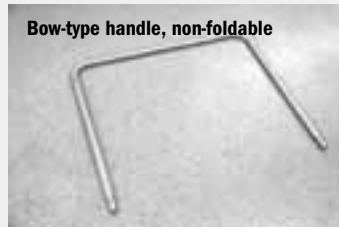
ACCESSORIES

- 9805112016 Bow-type handle, non-foldable (mounting kit)
- 9805112001 Foldable bow-type handle with integrated dead man-s brake (mounting kit), can be used for gauges 1435 – 1524 mm
- 8005112013 Brake rod to sleeper crib

For screwed design

- 9869120035 Dead man's brake
- 9869150035 Bow-type handle

Bow-type handle, non-foldable



Bow-type handle with deadman brake



52.16 Transporting Device

For transporting long-welded rails, track construction equipment and tools

- Light-weight, sturdy vehicle with a platform made of perforated aluminium plates with a non-slip surface
- No accumulation of water or dirt
- Ball bearing synthetic running wheels/optionally sheet steel jacketed
- Carrying handles on the sides
- Parking brake acting on two wheels



TECHNICAL SPECIFICATIONS

Standard design	steel construction
Carrying capacity	15 t
Cross beam length	1900 mm
Running wheel diameter	250 mm
Max. permitted speed	30 km/h
Dimensions (L x W x H)	19000 x 7800 x 390 mm
Gauge	1435 mm
Weight	~187 kg

ACCESSORIES

Connecting rods

- 8261850002 Length 1780 mm
- 8820032000 Connecting distance 5700 mm
- 8820032100 Connecting distance 4565 mm

- 8005216005 Trailer coupling, both sides
- 8005216006 Trailer coupling, one side



Trailer coupling

52.18 Towing Device



For recovering and transporting rail vehicles with defective wheels or wheel sets.

The running wheels of the rail vehicle are placed on the towing device, the vehicle is locked securely via the wheel flanges of its running wheels.

ITS BENEFITS. YOUR BENEFITS.

Cost and time savings due to modular design

- Quick assembly and recovery
- Low weight
- High carrying capacity due to sturdy diagonally interlocking frame (up to 300 kN)
- Reducing consequential costs (e.g. line closure) to a minimum

User-friendly due to modular construction

- Low weight of individual components

TECHNICAL SPECIFICATIONS

Gauge	1435 mm
Rail vehicles to be towed with running wheel	diameter 630 - 1250 mm
Pivoting range of rerailing bridge (centre pivot plate)	+/- 5°
Axle base	1300 mm
Running wheel (measuring circle)	dia. 300 mm
Tyre width	135 mm
Wheel flange height	32mm
Towing speed	40 km/h
Height of running wheel above top of rail (rail vehicle)	approx. 17 - 84 mm
Carrying capacity	300 kN (30 t)
Total weight	~630 kg
Modular design, individual component max.	~71 kg
Dimensions additional equipment	
Rerailing bridge (L x W x H)	approx. 22000 x 3500 x 140 mm
Support width	~2200 mm

ACCESSORIES

8720180252	Mounting jack, carrying handles with hook-in claws for carrying or placing pre-mounted longitudinal beams onto wheel sets of towing device (2 off required per device)	8720180220	Adapter for rerailing bridge LUKAS
8720180258	Adapter for rerailing bridge, type „DUO – LUKAS“	8720180222	Adapter for rerailing bridge MFD
8720180286	Transverse rerailing device	8720180276	Rerailing bridge for 8720180220
8720180384	Slip-on cuff for fixing roller	8720180278	Side support for bogie (square perforation)

52.30 Track Trolley

For transporting track construction equipment, tools and materials

- Light metal construction
- Can be disassembled into 5 parts (without tools)
- Heaviest individual component 50 kg
- Easy to assemble and disassemble
- Ball bearing aluminium running wheels
- Insulated from rail to rail
- Dead man's brake on 2 wheels



TECHNICAL SPECIFICATIONS

Permitted carrying capacity	2 t
Gauge	1435 mm
Running wheel	diameter 200 mm
Dimensions (L x W x H)	15600 x 18900 x 890 mm
Weight with dead man's brake	~147 kg
Weight without dead man's brake	~138.5 kg

58.03/58.62 Tow bars

58.03/12.01 Straight tow Bar

- Length 1500 mm
- Used for Rockinger coupling/Rockinger coupling
- Max. permitted thrust-traction force = 100 kN
 $\Delta h \pm 100$ mm



58.03/03 Slanted 800 580 3001

- Length 1450 mm
- Used for Rockinger coupling/Rockinger coupling
- Max. permitted thrust-traction force = 100 kN
 $\Delta h = 465$ mm max



58.62/11 Slanted 800 586 2001

- Length 1450 mm
- Used for standard draw hook/Rockinger coupling
- Max. permitted thrust-traction force = 30 kN
 $\Delta h = 325$ mm max



58.62/12 Straight 800 586 2002

- Length 1250 mm
- Used for standard draw hook/Rockinger coupling
- Max. permitted thrust-traction force = 30 kN
 $\Delta h \pm 100$ mm



59.08 Wagon Mover

For moving wagons of up to 60 t total weight

- To be used on flat surfaces
- For flat bottom and grooved rails as well as on slab track
- Recommended wheel diameter 600 to 1000 mm
- Dimensions (L x W x H) 25000 x 1900 x 140 mm
- Weight ~12 kg



59.10 Drag Shoe

For dragging slowly rolling vehicles

- Standard drag shoe of DB
- Double fish-plated
- Cap and handle replaceable
- Dimensions (L x W x H) 550 x 90 x 140 mm
- Weight ~8,5 kg



68.03 Rail Tilting Device

For manual tilting of all common rail types

- For all rails of a weight up to 65 kg/m
- Dimensions (L x B x H) 1300 x 140 x 35 mm
- Weight ~6 kg



69.20 Sleeper Lifting Device

For lifting lower lying sleepers during track assembly with hook-in part for grooved plates (K-type construction) and for sleeper screws (W-type construction)

- Dimensions (L x B x H) 1040 x 60 x 190 mm
- Weight ~4 kg



TAMPING

MOVES BALLAST.

TAMPING



62.05 Vertical Tamper



For lasting correction of track level errors.

For establishing a perfect and lasting track geometry in under 2 mins/ sleeper. Deviations from the nominal geometry caused by level errors jeopardise regular railway operation and result in restricted speed sections or even line closures.

The individual models compact the ballast bed under the sleeper optimally. The ROBEL vertical tamping principle enables outstanding interlocking of the ballast and thus a permanently stable track geometry. Apart from economic and operational efficiency of these products another central consideration in the development of the vertical tamber series was the human factor. The 2-level vibration decoupling developed and patented by ROBEL reduces the hand-arm vibration to a minimum. In addition to that the low weight of all models also goes easy on the operator. In other words, the track operator experiences ergonomic and comfortable working.

ITS BENEFITS. YOUR BENEFITS.

Permanent track stability

- Permanently stable track geometry with the ROBEL vertical tamping principle
- Optimum compaction of ballast under the sleeper
- Excellent interlocking of the ballast ensures long durability and higher bearing load
- Continuous railway operation - better utilisation of line capacity

Increased operational efficiency

- High tamping performance due to more tamping operations per unit of time
- Less operator fatigue due to lower weight
- Minimum hand-arm vibration thanks to patented 2-level vibration decoupling
- Longer work shifts per employee possible (in line with statutory requirements)

Subsequent cost savings

- No need for replacing sleepers and ballast thanks to sleeper- and ballast-friendly tamping.
- Low wear costs and better availability due to solid design.
- Replaceable tamping tool made of wear-resistant steel
- Minimum maintenance costs

Health & safety

- Compliance with occupational health and safety regulations
- Fewer sickness absences and stoppages
- Happier employees

due to:

- Low weight
- 2-level vibration decoupling
- Cover for thermal shielding
- Exhaust gas routing away from the operator (with petrol model)
- Electric model
- Option: Central safety shutdown

Applications

- Can be used for any track bed condition
- From congested urban areas to the open line
- Irrespective of climate and topography
- From local application through to heavy duty maintenance
- 62.05L ideal for welding crews

TECHNICAL SPECIFICATIONS

62.05 Drive air-cooled 2-stroke engine

Type	Kawasaki TJ45E
Output	1.42 kW at 8000 rpm
Dimensions (L x W x H)	4150 x 4950 x 1990 mm
Weight	~24 kg

62.05 Drive electric motor

Type	400 V, 50 Hz
Output	0.75 kW at 2850 rpm
Dimensions (L x W x H)	3700 x 4600 x 1080 mm
Weight	~27.5 kg

62.05 Drive hydraulic motor

Output	3 kW at 3500 rpm
Dimensions (L x W x H)	4200 x 5000 x 1230 mm
Weight	~24.9 kg

NEW

62.05L ROBEL Battery drive

Power	1600 W
Dimensions (L x W x H)	4200 x 5000 x 1120 mm
Weight	~21.8 kg

NEW

62.05L Drive air-cooled 4-stroke petrol engine

Type	Honda GX35
Output	1.2 kW at 7000 rpm
Dimensions (L x W x H)	4100 x 5100 x 1200 mm
Weight	~18.8 kg

62.05L Short Version drive air-cooled 4-stroke petrol engine

Type	Honda GX35
Output	1.2 kW at 7000 rpm
Dimensions (L x W x H)	4200 x 5000 x 1230 mm
Weight	~18.5 kg

62.05L Drive air-cooled 4-stroke petrol engine

Type	Dolmar
Output	1.5 kW at 7500 rpm
Dimensions (L x W x H)	4100 x 5100 x 1200 mm
Weight	~19.9 kg



ACCESSORIES

62.05

Safety cut-off: On the work site the audibility of acoustic warning signals cannot be guaranteed 100%. For the vertical tamper a safety cut-off was designed that will alert to dangers when necessary. The operator can concentrate on tamping on the work site and is warned of approaching trains by the central cut-off of the vertical tamper, whereby a lookout can stop up to 4 vertical tampers simultaneously. This indicates to the operators that they have to leave the danger zone immediately.

8809910004	Conversion kit, one each required per vertical tamper
9008120435	Connection cable, one each per vertical tamper
9008120434	Cable drum, can be used for 1 to 4 vertical tampers



62.05 and 62.05L

8808960110	Transport box
8868230001	Rail movement indicator, indicates the horizontal movement of the rail in relation to the ballast.

62.04 Electrical Tamping Unit

For undertamping sleepers of all types with ballast and gravel

- Equips a tamping crew of 4 persons
- A vibration tamping unit consists of 3 assemblies, i.e. 2 vibratory tampers on both the left and right plus 1 generator and 1 distribution box with its connecting cable.
- Vibrating blade made of hard-wearing, high tensile manganese steel
- Supply cable approx. 10 m long with 16 A CEE plug
- Unlike with impact tampers no damage to concrete sleepers
- Power generator fitted in a tubular protective frame



TECHNICAL SPECIFICATIONS

Vibration tamper	
Output	0.4 kW
Dimensions (L x W x H)	5200 x 2600 x 600 mm
Weight	~34.8 kg
Distribution box	
Dimensions (L x W x H)	3500 x 3000 x 470 mm
Weight	~4 kg
Drive/power generator recommended output	= 4 kVA
51.12 Light Track Trolley, gauge 1435 (special equipment)	
Dimensions (L x W x H)	8060 x 18560 x 220 mm
Weight	~26 kg
Single-axle hand trolley for power generator (special equipment)	
Dimensions (L x W x H)	4300 x 3100 x 240 mm
Weight	~25 kg

ACCESSORIES

- 9008060025 Distribution box with emergency stop switch
- 9000600369 Single-axle hand trolley for transporting power generator with suspension eyes and rubber handles, with 2 running wheels, 350 mm dia.
- 9008120218 Cable drum/extension lead, approx. 30 m long
- 9008230097 Socket adapter
- 8868230001 Rail movement indicator, indicates the horizontal movement of the rail in relation to the ballast.



MINIMA 1 Small Tamping Machine



Mechanised with a tamping unit it corrects track geometry errors of small work sites with optimum compacting of ballast Has 4 individual, laterally swivelling tamping tools with edges highly wear-resistant due to armouring via hard electrodes.

ITS BENEFITS. YOUR BENEFITS.

Efficient & maintenance-friendly

- Lasting track stability due to excellent ballast interlocking
- Low maintenance and servicing costs due to simple, solid and mature technology
- No manual work thanks to full mechanisation

Optimum availability

- Optimum availability thanks to simple, solid and mature technology

Flexible & easy to operate

- Diverse possibilities of use thanks to its optimum size, even on narrow gauge railways
- Easy regauging
- Easy to transport, can be simply loaded on lorry

Applications

- Small work sites
- Factory tracks

TECHNICAL SPECIFICATIONS

Length	2700 mm
Width	2600 mm
Height	2000 mm
Wheel base	1500 mm
Wheel diameter	400 mm
Engine output	35 kW (47 hp) at 2300 rpm
Driving speed	15 km/h in both directions, continuously adjustable
Weight	~3 t

ACCESSORIES

Track Jack ROBEL 47.14
Track Gauge and Superelevation Measuring Device ROBEL 83.37

Please contact your ROBEL partner for details on accessories.

MINIMA 2 Lifting Slewing and Tamping Machine



Mechanised with 2 tamping units it corrects track geometry errors of medium-sized work sites with optimum compacting of ballast. All necessary processes are combined in one machine: lifting, slewing, tamping and levelling

ITS BENEFITS. YOUR BENEFITS.

Economic efficiency & low maintenance

- Lasting track stability due to excellent ballast interlocking
- High throughput due to proven asynchronous pressure vibration tamping system
- Tamping of double sleepers
- Low maintenance and servicing costs due to simple, solid and mature technology

Flexible & easy to operate

- Can be deployed flexibly for different gauges
- Integration of all necessary processes in one machine: lifting, slewing, tamping and levelling
- Movable base frame (hydraulically or mechanically adjustable) for different sleeper spacing
- Suitable for loading on lorry

Applications

Medium-sized work sites
Factory tracks
Mines

TECHNICAL SPECIFICATIONS

Drive	diesel engine
Type	Hatz 4L41C
Output	47 kW (64 hp) at 2300 rpm
Length	2650 mm
Width	2780 mm
Height	2225 mm
Wheel base	2100 mm
Wheel diameter	400 mm
Driving speed	15 km/h in both directions, continuously adjustable
Weight	~5.5 t

ACCESSORIES

Track Gauge and Superelevation Measuring Device ROBEL 83.37
Test pendulum
Off-tracking rails with adjustable blocks
Hydraulic centre pivot plate

4 traversing rollers
Optical Track Levelling Device
Equipment for tamping double sleepers
Please contact your ROBEL partner for details on accessories.



For maintenance of tracks, switches and crossings

ITS BENEFITS. YOUR BENEFITS.

Rentability & Quality

- Asynchronous pressure vibration tamping system: powerful tamping unit for local correction of track level errors
- Quick return on investment due to high tamping performance and quality

Flexibility

- Compact vehicle concept for easy transport
- Laterally movable tamping unit frame at the front of the machine
- Four tamping tools can be slewed sideways individually
- Edges of tamping tool pressure plates with highly wear-resistant armouring via hard electrodes
- Precise motion sequences of the hydraulic work units thanks to linear control

- Operator's seat with all of the controls located immediately behind the tamping unit
- Hydrostatic drive with hydraulic motor acting on front axle via helical gearbox
- Braking of machine with hydrostatic drive, mechanical parking brake
- Even system pressure and non-jerky operation of all hydraulic work sequences via pressure oil reservoir guaranteed
- Hydraulic oil tank with intake and return line filter

Applications

Short to medium-length track sections

TECHNICAL SPECIFICATIONS

Dimensions (L x W x H)	5850 x 2550 x 2660 mm
Axle base	2450 mm
Running circle diameter	550 mm
Output 61 kW at	2200 rpm
Driving speed	20 km/h in both directions, continuously adjustable
Weight	~8.35 t

ACCESSORIES

Trailer with electric winch for road transport
47.14 Mechanical Track Jack

Please contact your ROBEL partner for details on accessories.

SECURING MEASURING



68.05 Rail Clamp

68.05 Rail Clamp

For true-to-form and secure connection of two rail ends at insulated joints, fractured rails and determined rail defects, from prevention to repair. Various possibilities of use due to different types of rail clamps for different rail types.

It is fitted directly onto the rail joint using 2 flat fish-plates. Can also be deployed for thermite welding with the use of cropped fish-plates (supplied by customer). Even with little space between rail foot and ballast bed.

ITS BENEFITS. YOUR BENEFITS.

Flexibility & cost efficiency thanks to

- Compact designs
- Minimum ballast excavation required, also suitable for the majority of slab tracks
- Long service life with reduced checking frequency and maintenance effort
- High passing speed depending on rail defect

Safe and user-friendly due to

- Securing fish-plate with triple safety effect
- Colour coding
- Precise adjustment to rail profile and fish-plate
- Connector and securing fish-plate are secured with a wrench size and the same torque
- Theft-proof
- DB user acceptance (approval)



68.05 Version 4 Standard long

Dimensions (L x W x H)	190 x 280 x 130 mm
Tightening torque	580 Nm
DB user acceptance (approval)	up to 160 km/h and up to 200 km/h
for construction and operating tracks	(with internal transverse defect)
For rail types	UIC60, S49, S54, UIC54, U50, BS100A, BS113A
Weight	~21.5 kg



68.05 Version 5 Standard short

Dimensions (L x W x H)	105 x 280 x 130 mm
Tightening torque	580 Nm
DB user acceptance (approval)	up to 160 km/h and up to 200 km/h
for construction and operating tracks	(with internal transverse defect)
For rail types	UIC60, S49, S54, UIC54, U50, BS100A, BS113A
Weight	~12.5 kg



68.05 Version 5 AUS

Dimensions (L x W x H)	105 x 280 x 130 mm
Tightening torque	580 Nm
Approval	up to 160 km/h
For rail types	AS41kg, AS47 kg
Weight	~12.5 kg



68.05 Version 6	
Dimensions (L x W x H)	190 x 280 x 130 mm
Tightening torque	580 Nm
Approval	up to 160 km/h
For rail types	OT50, 91lb NZR, AS50kg
Weight	~21.5 kg



68.05 Version 7 AUS	
Dimensions (L x W x H)	190 x 280 x 130 mm
Tightening torque	580 Nm
Approval	up to 160 km/h
For rail types	AS53kg, AS60kg, AS60kg
Weight	~21.5 kg



68.05 Version 9 short	
Dimensions (L x W x H)	105 x 280 x 130 mm
Tightening torque	300 Nm
Network Rail approval	up to 160 km/h
For rail types	BS113A, UIC60
Weight	~12.5 kg



68.05 Version 10	
Dimensions (L x W x H)	190 x 280 x 130 mm
Tightening torque	300 Nm
Network Rail approval	up to 160 km/h
For rail types	BS113A, UIC 60
Weight	~12.5 kg



68.05 Version 11 short	
Dimensions (L x W x H)	190 x 280 x 130 mm
Tightening torque	300 Nm
Approval	up to 160 km/h
For rail types	63T, 50T, UIC60
Weight	~12.5 kg



68.05 Version 13	
Dimensions (L x W x H)	105 x 280 x 130 mm
Tightening torque	580 Nm
Approval	up to 160 km/h
For rail types	UIC60, DSB45
Weight	~12.5 kg



ACCESSORIES

- 9002501790 Torque wrench
- With adjusting scale
 - Automatic release
 - Torque range 130 – 650 Nm
 - 3/4 inch square drive
 - Weight ~2.9 kg
 - Reversible push-in ratchet



Torque wrench



Socket A/F 41

- 9002501120 Socket A/F41, hexagon socket wrench insert
3/4 inch square drive

69.30 Worksite Fencing System



Mobile fencing system for securing work sites

Protection of workforce from dangers arising from trains passing on operating adjacent tracks. Numerous applications both for permanent use as well as for temporary daily use. Compliant with DB AG group requirements (DS132 03, section 5, paragraph 6).

ITS BENEFITS. YOUR BENEFITS.

User-friendly

- Easy and quick assembly
- Low weight of length-adjustable, galvanised fence post elements in solid or collapsible design

Improved safety

- Real and visual barrier
- Concentration on main activity in closed-off area
- Demarcation
 - to adjacent track
 - from danger zones on track
 - for paths and roads
 - from on-track machines
 - during work at nighttime
 - from various assemblies and work sites

- Compliant with the Accident Prevention and Safety Measures in the Danger Zones of Railway Tracks (GUV 15.2, DS 13.203, Germany)
- GS approved

Potential savings from

- No need for acoustic disruptive crew warning signals
- Setup lengths can be extended flexibly
- For trains passing on adjacent tracks at a maximum speed up to 160 km/h
- High quality and flexibility in daily use

TECHNICAL SPECIFICATIONS

Weight per fence post element

~7 kg

ACCESSORIES

- 9800693077 Plastic grating, red, 0.5 m high, 50 m each
- 8649910001 Barrier tape holder
- 9000203470 Barrier tape



Plastic grating red

70.01 Generator

Ensures supply of electrical power, independent from the mains supply.

In various designs, e.g. with trolley or on transport trolley, generator output as per customer requirement.

- Design in accordance with VDE (German Association of electrical Engineers), GS certification mark
- Noise emission complies with EEC Directive 84/536 on Noise Protection
- Sound power level LWA 100 dB (A) pW
- Incl. GW 308 (ISO monitoring with switch-off), Protection type IP 54
- Protection type IP 54 with oil level monitoring
- With oil level monitoring
- Long operating times due to large tank
- CE declaration of conformity
- Operating instructions and spare parts list



TECHNICAL SPECIFICATIONS

Drive	4-stroke petrol engine	4-stroke petrol engine
Type	HONDA GX 270, with oil level monitoring	HONDA GX 390, with oil level monitoring
Output	5.4 kW at 3000 rpm	9.6 kW at 3600 rpm
Unit	fitted in a tubular protective frame with 2 lifting handles with GW 308, ISO monitoring with switch-off	fitted in a tubular protective frame with 2 lifting handles with GW 308, ISO monitoring with switch-off
Output	4 kVA/400 V and 3.7 kVA/230 V, 50 Hz	6.1 kVA/400 V and 5.2 kVA/230 V, 50 Hz
Protection type	IP 54 (protection insulated)	IP 54 (protection insulated)
Weight	~89 kg	~100 kg

Drive	4-stroke petrol engine	Diesel engine
Type	Briggs&Stratton, with oil level monitoring	HATZ 1B40, with oil level monitoring
Output	14.7 kW at 3600 rpm	Output 7.3 kW at 3600 rpm
Unit	with GW 308, ISO monitoring with switch-off	fitted in a tubular protective frame with 2 lifting handles with GW 308, ISO monitoring with switch-off
Output	9.0 kVA/400 V and 6.0 kVA/230 V, 50 Hz	4.7 kVA/400 V and 4 kVA/230 V, 50 Hz
Protection type	IP 54 (protection insulated)	IP 54 (protection insulated)
Weight	~134 kg	~122 kg

ACCESSORIES

- 9000600369 Single-axle trolley for transporting the generator, with suspension eyes and rubber handles, with 2 running wheels of 350 mm dia.
- 9008060025 Distribution box with emergency stop switch
- 9008120218 Cable drum/extension lead, approx. 30 m long
- 9008230097 Socket adapter from Euro socket CEE16A230V to Schuko socket



73.06 Site Illumination

For extensive lighting of work sites

Improved work quality & safety thanks to

- Good illumination of work area
- Sturdy design and stability
- Quick and easy assembly

Flexibility

Compact design, uses up little space during transport and working



5 versions with varying luminosity and outputs.

73.06

Consisting of: height-adjustable light mast with 2 floodlights and mobile power generator

- Telescopic mast with pneumatic hand pump
- Basket provides improved stability
- Floodlights can be swivelled up to 30°

73.06 KLL

Equipped with special compact fluorescent lamps with very high output at low current consumption. 4 of the 8 lamps can be turned off, providing glare-free light in one direction.

- Illuminated area of up to 700 m²
- Can withstand wind speeds of up to 120 km/h due to special stand
- Saves space and quick to set up
- Supplied in impact-resistant flight case

TECHNICAL SPECIFICATIONS

Version with 230VAC

Diameter	200 mm
Length	900 mm
Lamp weight	~8.2 kg
Protection type	IP44
Protection class	I
Optimum height in use	3500 mm
Assembly time	~1 min
Stand weight	~21.5 kg
Illuminated area	700 m ²
Number of lamps	8x80 W
Output	365-710 W*
Supply voltage	230 VAC
Generator power required (230VAC)	1.0 kW

*depending on operating mode



73.06 LED

Suitable for all areas requiring extensive lighting. Available versions with one, two or four lamps. High light output at low power consumption.

- Maintenance-free
- Wide service temperature range: -40°C to +55°C
- No UV/IR radiation
- Extendable from 1000 to 3500 mm
- Folds down to 1000 x 190 x 190 mm



TECHNICAL SPECIFICATIONS

LED lamp	
LED output	40 W
Voltage	230 VAC
LED lifespan	> 50,000 h
Housing + reflector material	Aluminium
Protection type/class	IP65/I
Lamp weight	~3.3 kg
Dimensions of a lamp (L x W x H)	262 x 185 x 230 mm

73.06 LED Battery

- Battery operated version
- Maintenance-free and no cable required
- Wide service temperature range: -40°C to +55°C
- No UV/IR radiation
- Extendable from 1000 to 3500 mm
- Folds down to 1000 x 190 x 190 mm



TECHNICAL SPECIFICATIONS

Lighting duration	10 h at 100% luminosity 20 h at reduced luminosity
Charging time	6 h/100% charged
LED output	30 W
Charging voltage	230 VAC
Battery LI-ION	10 Ah 36 VDC
Luminous flux	100 lm/W
Cover	5 mm safety glass
Protection type/class of lamp and battery	IP65/III
Protection type/class of charger	IP44/I
Weight including flight case	~22 kg
Dimensions of flight case (L x W x H)	1250 x 430 x 220 mm

MEASURING DEVICES

We calibrate your measuring devices! Contact your ROBEL partner.

82.05 Versine Measuring Device

For measuring track curves

- Two angle supports in aluminium with level
- 45 m chord
- Ruler
- Complete in canvas bag
- Weight ~2.6 kg



82.06 Versine Measuring Device

For easy checking and determination of versines in track curves

- Can be used for all common rail profiles
- Measuring chord adjustable to rail height and from side to side
- Easy attachment to rail foot
- Obstructionless
- Consisting of 2 tensions clamps with rope drum and 70 m nylon rope
- Weight ~4.3 kg



82.07 Sighting and Levelling Unit

For determining the longitudinal level (with reference to the top of rail) and cross level as well as for all other levelling tasks, e.g. switch levelling.

- Scales every 10mm, alternating in 1- and 2-mm graduation
- Minus zone of level slide marked with a red bar
- Telescope magnification 24-fold
- Lens opening 36 mm
- Portrait image
- Shortest adjusting distance ~0.4 m
- Adjusting distance ~1.2 mm to 30 m
- Rotation range with micro adjustment 360°
- System height above top of rail 1300 mm
- Tilting device used as sighting facility
- Tilting range $\pm 40 \text{ ‰}$
- Levelling rod used for levelling at fixed points
- Scale graduation 1 mm
- Measuring range of basic scale $\pm 800 \text{ mm}$
- Measuring range of adjustable level slide
 - + 150 mm
 - 100 mm
- Total weight ~10.3 kg



82.11 Track Square



For aligning sleepers

Double leg

- In robust aluminium design
- With inner and outer stops
- Insulated from rail to rail
- Weight ~3.5 kg

TECHNICAL SPECIFICATIONS

	Fixed design	Collapsible design
Dimensiona (L x W)	1700 x 1400 mm	1700 x 700 mm
Weight	~3.6 kg	~3.2 kg

ACCESSORIES

- 9800820010 Target rod lighting consisting of: 1 cold cathode neon lamp, 12 V, for side lighting of adjustable level slide, including one rechargeable battery.
Battery, charger, shoulder bag
- 9800820001 Push-on part 0 - 150 (Standard = 0 - 50)
- 9800820008 Transport and storage box of water-resistant, glued plywood with carrying handles

83.07 Switch Gauge and Superelevation Measuring Device

For measuring

- Track gauge
- Check rail gauge
- Guard rail gauge
- Flange groove
- Superelevation

Measuring range:

- Track gauge 1435 mm -10 mm to +40 mm
- Check rail gauge 1394 mm -10 mm to +10 mm
- Back to back distance (2nd check rail gauge): 1332 mm to 1365 mm
- Flange groove 31 mm to 60 mm
- Measuring accuracy +/- 0.5 mm
- Weight ~2.5 kg



ACCESSORIES

- 9891080091 Conversion kit for grooved rails
 9001100169 Bag for gauge 1435
 R_KAL_INT Calibration



Conversion kit for grooved rails

83.07 Compact Switch Gauge and Superelevation Measuring Device

For measuring

- Track gauge
 - Check rail gauge
 - Guard rail gauge
 - Flange groove
 - Superelevation
- Light-weight, handy size
 - Aluminium rectangular tube
 - Gold anodised, insulated
 - Superelevation measuring integrated

Measuring range:

- Track gauge 1435 mm; 1415 mm to 1475 mm
- Check rail gauge 1385 mm to 1405 mm
- Back to back distance 1344 mm to 1361 mm
- Flange groove 30 mm to 83 mm
- Superelevation -30 mm to +200 mm
- Measuring accuracy +/-0.5 mm
- Scale graduation 1 graduation mark = 1 mm
- Weight ~2.5 kg



ACCESSORIES

- 9808320003 Switch blade detection adapter, DB with check gauges L1, L2, L2-19, L2-21
 9808320004 Switch blade detection adapter with check gauges L1, L2
 9808307014 Transport box for gauge 1435
 9002200169 Transport bag
 R_KAL_INT Calibration
 9808307013 Measuring bolt set for grooved rails



Switch blade detection adapter



Measuring bolt
dia. 20 mm



Measuring bolt set for grooved rails

83.15 Fixed Point Measuring Device

For measuring distances between fixed points and signal post, between concrete walls etc. and the track and for checking individual level values using an appropriate measuring gauge

- Attached to the rail by magnets
- Exact position adjustable via a level
- Weight ~1.2 kg



83.18 Joint Gap Measuring Device

For measuring the distance between two adjoining rails

- Aluminium
- With measuring scale
- Measuring range 1 mm to 15 mm
- Weight ~0.1 kg



83.20 Stock Rail and Switch Blade Gauge

For easy checking of wear spots in the switch blade area as per DB regulation

- Insulated from rail to rail
- With test gauge dia. 4 mm
- Weight ~1.4 kg



83.37 Track Gauge and Superelevation Measuring Device

For measuring

- Track gauge
- Superelevation

- Light-weight, handy measuring device
- Track gauge -10 mm to +40 mm
- Superelevation -30 mm to +200 mm
- Reading accuracy 1 graduation mark = 1 mm

Measuring range:

- Track gauge 1435 mm -10 mm to +40 mm
- Superelevation -35 mm to +195 mm
- Equipped with measuring bolt for flat bottom rails (14 mm)
- Weight ~2.7 kg



ACCESSORIES

- 9891832120 Measuring bolt for 9 mm grooved rails, 3 nos. are required
- 9808307014 Transport box for gauge 1435
- R_KAL_INT Calibration



Stop bolt for grooved rails

83.37 Compact Track Gauge and Superelevation Measuring

For measuring

- Track gauge
- Superelevation

- Light-weight, handy size
- Aluminium rectangular tube
- Gold anodised, insulated
- Superelevation measuring integrated

Measuring range:

- Track gauge 1435 mm; 1415 mm to 1500 mm
- Superelevation -30 mm to +200 mm
- Measuring accuracy +/-0.5 mm
- Scale graduation 1 graduation mark = 1 mm
- Weight ~2.5 kg



ACCESSORIES

9808337007	Measuring bolt set for grooved rails
9808307014	Transport box for gauge 1435
9002200169	Transport bag
R_KAL_INT	Calibration

83.50 Digital Switch Gauge and Superelevation Measuring Device

For measuring

- Track gauge
- Check rail gauge
- Flange groove
- Back to back distance
- Cross level on flat bottom and grooved rails

- Combined track construction measuring device for new track and maintenance
- All values are clearly shown on a display and therefore can be viewed easily at one glance
- Made of gold anodised sturdy aluminium tube, with integrated electronics and measuring mechanics
- With turning knob for gauge adjustment

Measuring range:

- Track gauge -20 mm/+40 mm
- Superelevation -35 mm/+200 mm
- Flange groove -11 mm/+42 mm
- Check rail gauge - 9 mm/+11 mm
- Back to back distance - 8 mm/+8 mm



ACCESSORIES

9808350008	Transport case
R_KAL_INT	Calibration



Transport case

83.87 Platform Clearance Gauge

For measuring the distance between centre of track and platform (ramp) and for measuring the height from top of rail to platform edge

- Gauge 1435 mm
- Made of rectangular aluminium tube, insulated
- With superelevation and track gauge measuring device
- Weight ~5.5 kg

Messbereich:

- Horizontally from centre of the track 0 mm to 2050 mm
- Vertically from top of rail 0 mm to 1200 mm
- Track gauge - 10 mm to + 40 mm
- Superelevation - 30 mm to + 200 mm



ACCESSORIES

- 9808387007 Transport box for device with superelevation
- 9808387004 Transport box for device without superelevation

85.01 Rail Head Wear Measuring Instrument (SKM 1)

85.01 Rail Head Wear Measuring Instrument (SKM 2)

For measuring vertical and lateral rail wear (at 22.5, 45 and 67.5 degrees to the rail centre line).

- For rail types S41, S49, S54 and UIC60.
- With handy plastic case
- Version depending on rail type
 - SKM1 Standard equipment: S49, S54, UIC60
 - SKM2 Standard equipment: S49, S54, UIC60
- Special equipmen: Other rail profiles
- Weight ~1.2 kg/~1.5 kg

Mesuring range:

- SKM1, 0°, 45°
- SKM2, 0°, 22.5°, 45°, 67.5°



85.02 Measuring Gauge

For checking measurements L + L1 during build-up welding work in switches and crossings

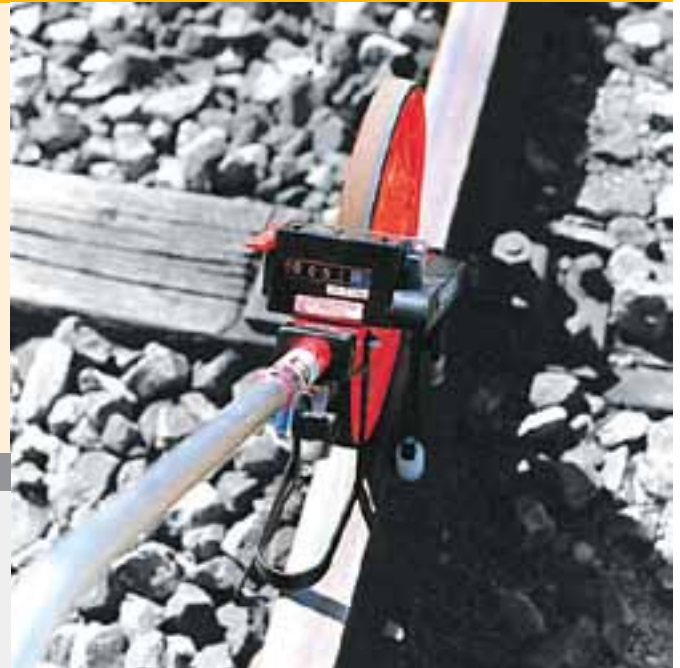
- Galvanised surface
- For rails S 49/54 UIC 60
- Special equipment: Other rail profiles
- Weight ~0.6 kg



85.05 Rail Measuring Roller

For measuring the lengths of rail sections

- Version for S49, S54, UIC 60
- Measuring range up to 10,000 m, measuring tolerance 0.02%
- Special equipment carrying case
- Weight ~5.5 kg



ACCESSORIES

- 9891850005 Carrying case
Robust design with carrying handle
Of rugged, water-proof material

85.07 Track Spacing Instrument

For checking the track geometry with reference to a fixed point at the catenary support or adjacent track.

Distance and level measurements to the fixed point can be established accurately in a single operation.

- Model includes transport case
- Measuring range Measurable distance up to 4262 mm
- Measurable height up to 700 mm
- Weight ~6.5 kg



85.20 Rail Thermometer

For measuring the rail temperature

- Round model with magnet
- Outer diameter approx. 60 mm
- White dial plate with easy-to-read scale
- Measuring range -30 – 70° C/-20 – 150° F
- Weight ~0.07 kg



ACCESSORIES

- 9000400207 Aluminium screw cap box

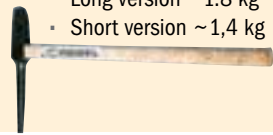
DEVICES TOOLS



69.01 Drift Punch

Versions:

- Long version 290 mm
- Short version 210 mm
- 15 mm
- 16 mm



Hickory handle:

- Long version ~1.8 kg
- Short version ~1.4 kg

69.02 Crow Bar

- With cutting edge and point
- 1.25 m ~6.2 kg
- 1.5 m ~8 kg

**69.09 Shovel Made of Steel Sheet**

- Available with or without handle
- Weight with handle ~1.9 kg, without handle ~1.1 kg

**69.10 Switch Broom**

- Available complete with handle
- Locking handle holder for multiple use
- Weight ~1.1 kg

**69.03 Hammer**

- For positioning rails into grooved plates and for driving plastic dowels into concrete sleepers
- With wear-resistant, replaceable plastic inserts
- Hickory handle ~5.2 kg

**69.12 Cold Chisel**

- C45 steel, tempered
- Cutting edge with grind
- ~1.7 kg

**69.04 Track Ram**

- To be used by 4 persons
- Wear-resistant, replaceable plastic inserts
- Weight ~103 kg

**69.13 Single-Tone Signal Horn**

- „Blowing horn“
- 1 bell mouth

69.06 Sleeper Hammer

- Forged with oval eye
- Depending on size ~5.5 kg, ~6.5 kg, ~9 kg

**69.15 Multi-Tone Signal Horn**

- 2-tone signal
- With 4 bell mouths
- With replaceable mouth piece
- Weight ~0.8 kg

**69.07 Ballast Fork**

- 9 arms
- Weight with handle ~2.7 kg, without handle ~1.8kg

**69.16 Clip Bolt Ejecting Device**

- For removing rusted clip bolts from grooved base plates
- Weight ~4 kg

**69.08 Points Lever**

- For installing and removing plastic clips
- Weight ~6 kg



SERVICE





What does good Service stand for?

Reliable stand-by duty of rail construction machines is a vital part of economic operation. Failure free performance and longtime availability reduce dwell time and cost. Preventative maintenance secures high functionality and minimizes subsequent damage.

Good service guarantees both a long life span and value preservation and is therefore the base for effective use of hand guided machines and equipment.

By buying a ROBEL product, you do not only get a high quality machine, but also a reliable service partner.

ROBEL offers expert advise and a wide variety of service activities, helping you to successfully do your job:

- Maintenance and repair using certificated original parts
- Modification and adjustment
- Damage assessment
- Calibration of measuring tools
- Original spare and wearing parts
- Machine demonstrations
- Phone consulting service
- Training of operators and workshop personnel

ROBEL Service stands for schedule adherence, for a good price performance ratio and for flexible, non-bureaucratic support during the whole life-span of a product.

Take advantage of our service portfolio and use the full potential of your machine!



ROBEL WORLDWIDE REPRESENTATIONS



AMERICA

Argentina

Mapeko Representaciones S.R.L.
Peter Korger
Cerrito 1266 2° Piso Of. 9
RA-C1010AAZ Buenos Aires
Tel +54-11-4816-0205; +54-11-4816-4824
Fax +54-11-4816-4806
E-Mail: mapekosrl@gmail.com
www.mapekorepresentaciones.com

Brazil

Comexport Cia de Comércio Exterior
Paula Silva
Av. das Nacoes Unidas,
no. 10.989 - 12 andar
Vila Olímpia
04578-900 SAO PAULO, Brazil
Tel +5111 21 62 18 46
Fax +5111 38 49 77 59
E-Mail: paula.silva@comexport.com.br
www.comexport.com.br

Chile

TYMA - R. Goyeneche y Cía. Ltda.
Rodolfo Goyeneche
Seminario 160, Santiago, Chile
Tel +56-2-2222-96-33
Fax +56-2635-38-73
E-Mail: tyma@tyma.cl

Ecuador

Rielequip Cía. Ltda.
Carlos Calderon
Manuel Guzman N38-91 y
Avenida Elroy Alfaro
Quito, Ecuador
Tel +593 2 2244071
Mob +593 998249851
E-Mail: ccalderonrielequip@ecutel.net

Canada

M&M Railway Supply, Inc.
Dickie McCarty
1273 Smith Cove Circle
Va. Beach, Virginia 23455, USA
Tel. +704 855 26 48
Fax +704 855 26 49
E-Mail: mmrailwayssupply@me.com

Colombia

Representaciones Pinz & Prieto SAS
Harry Pinz
CR 7 N° 74 56 OF 409, BOGOTA D.C.
Tel +57-1-3131616, Fax +57-1-3261721
E-Mail: hjpginz@aon.at
Pinz y Prieto representaciones Ltda.
Rodolfo Prieto
CR 7 N° 74 56 OF 409, BOGOTA D.C.
Tel +57-1-3131616, Fax +57-1-3261721
E-Mail: prietor@cable.net.co

Cuba

Achse Lateinamerika
Juan Carlos Alzuro López
Sucursal La Habana
María Isabel García Tremiño
Marina Hemingway, Casa 4014
5ta Avenida y 248, Playa
La Habana 22, C.P. 12200, Cuba
Tel +537-2-04-93-70
Fax +537-2-04-93-73
E-Mail: achse@enet.cu
www.achse-lateinamerika.de

Peru

Global Support Systems SA
Johannes Brahms 159
San Borja Lima - Perú
Tel +51 1 367 35 50
E-Mail: ventas@gss-peru.com
www.gss-peru.com

Mexico

Ruben Alejandro Chavez Diaz
AC DIESEL
Periferico Oriente # 75
Col. Constitucion De 1917
MEX-C.P. 09260 Cuidad de Mexico
+52-555-6905-045
Fax +52-555-6422-651
E-Mail: acdiesel1@prodigy.net.mx
E-Mail: acdiesel1@hotmail.com

Uruguay

Potencia S.R.L.
Rafael Crespo Matí
Ambrosio Velazco 1589
11400 Montevideo, Uruguay
Tel +598 2 614 24 07
Fax +598 2 614 24 08
E-Mail: Rafael@potenciauruguay.com.uy

Venezuela

LACO Representaciones S.A.
Hasso von Vultejus
Avenida Principal Lomas de Chuao
Quinta Laco, Urb. Chuao
YV-1061 Caracas
Tel +58-212-9924489, +58-212-9929798
Mob +58-414-867-2540
Fax +58-212-9929598
E-Mail: lacorep@cantv.net

United States of America

M&M Railway Supply, Inc.
Dickie McCarty
1273 Smith Cove Circle
Va. Beach, Virginia 23455, USA
Tel. +704 855 26 48
Fax +704 855 26 49
E-Mail: mmrailwayssupply@me.com

EUROPE

Belgium

Rail & Road Service
Olivier Saucez
27, route du cronchamps
4970 Stavelot, Belgium
E-Mail: saucez@rail-road-service.com

Bosnia Herzegovina

SATI-SAN
Ivana Racic
Nemanjina 4/II/216
11000 Belgrad, Republik Serbien
Tel +381-11-3613-861
Mob +381-64-1597-697
Fax +381-11-3613-861
E-Mail: ivana.racic.bgd@gmail.com

Bulgaria

ET „M.T.V-M. Ilev“
Maschinen und Technik Vertrieb
Mihail Ilev
Opaltschenska Str. 92, Bl.44, G.Ap.40
BG-1233 Sofia
Tel +35-929-311-153
Fax +35-929-311-153
E-Mail: mihail.ilev@gmx.net

Denmark

A.C. Lemvig-Müller
Torben Holst
Kronprinsessgade 26
DK-1306 Copenhagen
Tel +45-331-105-32
Fax +45-331-195-97
E-Mail: th@aclm.dk
www.aclm.dk

Germany

Regional Representation
Erwin Sinn KG
Gleisbaumaschinen und -geräte
Jochen Sinn
Sunderweg 6, D-58300 Wetter
Tel +49-2335-432-2
Fax +49-2335-285-5
E-Mail: info@sinnkg.de
www.sinnkg.de

Regional Representation
Ing.-Büro P. Will
Peter Will
Waldstr. 2, D-35418 Buseck
Tel +49-6408-2008
Fax +49-6408-4909
E-Mail: info@will-hv.de
www.will-gleistechnik.de

Regional Representation
Gerd Vogt
Am Sportplatz 8, 04567 Kitzscher
Tel.: +49 (0) 151 18856189
E-Mail: gerd.vogt@robel.info

Estonia

ASI INVENT
Kristjan Kaunissaare
Lahe 6-12, EST-90503 Haapsalu
Tel +372-52-388-66
E-Mail: info@asi-invent.ee

Finland

Trackpoint Oy
Risto Houttu
Sarvastonrinne 5a
00840 Helsinki, Finnland
Tel +35-896-823-890
Fax +35-810-290-9090
Mob +35-8500-415-637
E-Mail: risto.houttu@trackpoint.fi

France

URMA RAIL
Christian Bischoff
6, rue des Artisans
F-68780 Sentheim
Tel +33-389-825-992
Fax +33-389-828-971
E-Mail: urma.rail@orange.fr
www.urmarail.fr

Greece

DATARAIL
N. Steinhauer & Co.
Nikolaus Steinhauer
Akarnanias Str. 10
GR-115 26 Athen
Tel +30-210-7290708
Fax +30-210-7242040
E-Mail: info@datarail.gr
www.datarail.gr

Great Britain

Plasser UK Ltd.
Customer Support
Manor Road, W13 OPP London, GB
Tel +44-208-991-3085
Fax +44-208-998-1647
E-Mail: customer.support@plasser.co.uk
www.plasser.co.uk

Ireland

Plasser UK Ltd.
Customer Support
Manor Road, W13 OPP London, GB
Tel +44-208-991-3085
Fax +44-208-998-1647
E-Mail: customer.support@plasser.co.uk
www.plasser.co.uk

Italy

Plasser Italiana S.r.l.
Anke Perl
Via del Fontanaccio, 1
00049 Velletri; Italy
Tel.: +39 0 69 61 01 11
Fax: +39 0 69 62 61 55
E-Mail: info@plasser.it
www.plasser.it

Croatia

ITER d.o.o.
Željka Lončarević
Kneza Ljudevita Posavskog 23
HR-10000 Zagreb
Tel. +385-1-4646-454, +385-1-4618-737,
+385-98-98-28-528
Fax +385-1-4646-455
E-Mail: iter@globalnet.hr
www.iter-zg.hr

Latvia

Transfer-Marketing Centrs
Andris Birzgalis
Liepu aleja Cerini Baites pagasts
LV-2101 Rigas rajons
Tel +371-2945-1468
Fax +371-67-919-356
E-Mail: tmcriga@inbox.lv

Lithuania

Arbeitsfahrzeuge und Sondereinheiten
Transfer-Marketing Centrs
Andris Birzgalis
Liepu aleja Cerini Baites pagasts
LV-2101 Rigas rajons
Tel +371-2945-1468
Fax +371-67-919-356
E-Mail: tmcriga@inbox.lv

Hand-Operated Machines and Equipment
UAB Gitana
Žilvinas Imbrasas
Budrikų k. Sendvario sen.
LT-96320 Klaipėdos r.
Tel +370-46-390833, +370-46-410881
Fax +370-46-310485
Mob +370-687-26777
E-Mail: zilvinas.imbrasas@gitana.lt
www.gitana.lt

Luxembourg

Rail & Road Service
Olivier Saucez
Gruuss Strooss 22
L-9991 Weiswampach
E-Mail: saucez@rail-road-service.com

Macedonia

CAJD Aleksandar Dooel
Import-Export D.o.o.
Cvetan Hristov
Hristo Smirnenski 15
1000 Skopje, Mazedonien
Tel +389-23245808
Fax +389-23245808
Mob +389-70-206-126
E-Mail: cajdcele@t-home.mk

Montenegro

SATI-SAN
Ivana Racic
Nemanjina 4/II/216
11000 Belgrad, Republik Serbien
Tel +381-11-3613-861

Mob +381-64-1597-697
Fax +381-11-3613-861
E-Mail: ivana.racic.bgd@gmail.com

Netherlands

Nedstrail bv
Ing. H. C. Ottermann
Zwartenhof 55
6662 ZV Elst, Niederlande
Tel. +31 481 35 00 55
mob +31 6 26 78 37 19
E-Mail: hans@nedstrail.nl

Norway

Deutsche Plasser Services Norge AS
Kristoffer Robins vei 13,
NO-0978 Oslo
Tel +47-22101550, +47-91347097
E-Mail: post@robhel.no
www.robhel.no

Austria

ROBEL Bahnbaumaschinen GmbH
Florian Stapfer
Industriestraße 31
D-83395 Freilassing
Tel +49-8654-609-436
Fax +49-8654-609-445
Mob +43-664-46-58-018
E-Mail: florian.stapfer@robhel.info
www.robhel.info

Poland

Deutsche Plasser Bahnbaumaschinen GmbH
Wojtek Musiał
Oddział w Polsce
ul. Grabiszynska 251a
53-234 Wrocław, Poland
Tel. +48 71 3386300
Fax. +48 71 3386310
E-Mail: info@plasser.pl
www.plasser.pl

Portugal

Kurt Hommé & Companhia Lda.
Mr. José Gervasio P. Leite
Avenida Sacadura Cabral no 49 - R/C Dto
Lisboa
100-273 Lisboa, Portugal
Tel +351 217 97 71 42
Mob +351 961 10 01 57
E-Mail: kurthomme@sapo.pt

Romania

EXCO TRANSPORT SYSTEM SRL
Cristian Oprea, Genunea Burla
Bd. Dinicu Golescu 38
RO-010873 Bukarest
Tel +40-21-3102960, +40-21-3195381
Fax +40-21-3102967, +40-21-3195392
E-Mail: excosys@excosys.ro
www.excosys.ro

Russia

000 Holdenberg
Oleg Bochtarev
Ul. Millionnaya 29-3
191186 St. Petersburg
Russland
Tel +7-812-454-0698
Mob +7-921-325-8035
E-Mail: oleg.bochtarev@holdenberg.com
www.holdenberg.com

Sweden

Buffers Rail
Fabriksvägen 9
SE-186 32 Vallentuna
Tel +46-8-514-308-80
Fax +46-8-511-700-37
Anders Hove
E-Mail: anders.hove@buffers.se
Mikael Gustafsson
E-Mail: mikael.gustafsson@buffers.se
www.buffersrailindustry.com

Switzerland

Sersa Technik AG
Nordstrasse 1
CH-5612 Villmergen
Alain Balett
Tel +41-56-618-72-30
Fax +41-56-618-72-39
Mob +41-79-476-47-73
E-Mail: alain.balett@metrag.com
Jürg Hürner
Tel +41-56-618-72-30
Fax +41-56-618-72-39
Mob +41-79-38-84-441
juerg.huerner@sersa-group.com

Serbia

SATI-SAN
Ivana Racic
Nemanjina 4/II/216
11000 Belgrad, Republik Serbien
Tel +381-11-3613-861
Mob +381-64-1597-697
Fax +381-11-3613-861
E-Mail: ivana.racic.bgd@gmail.com

Slovakia

VHC Trade spol.s.r.o.
Zelený pruh 99
CZ-140 02 Prag
Blanka Matláková
Tel +420-24-144-3689
Fax +420-24-144-3826
E-Mail: bmatlakova@vhctrade.cz
Václav Husák
Tel +420-24-144-3689
Fax +420-24-144-3826
E-Mail: vhusak@vhctrade.cz

Slovenia

BIJOL d.o.o.
Janez Bijol
Livarska cesta 17
SLO-2367 Vuzenica
Tel +386-2-87-90-156
Fax +386-2-87-90-158
Mob +386-2-87-90-156
E-Mail: bijol@bijol.si

Spain

Plasser Española
Avenida de Las Lunas n°9
E-45529, Yuncler, Toledo
Tel +34-916-303152
Fax +34-916-304694
E-Mail: info@plasser.es
www.robhel-iberica.com

Czech Republic

VHC Trade spol.s.r.o.
Zelen pruh 99
CZ-140 02 Prag
Blanka Matláková
Tel +420-24-144-3689
Fax +420-24-144-3826
E-Mail: bmatlakova@vhctrade.cz
Václav Husák
Tel +420-24-144-3689
Fax +420-24-144-3826
E-Mail: vhusak@vhctrade.cz

Turkey

Orhan Onur Dis Ticaret A.S.
Mürbasan Sokak, Koza is Merkezi,
B Blok, Kat. 1
TR-80700 Besiktas-Istanbul
Tel +90-212-2759203
Fax +90-212-2753623
Hakan Gözkan
E-Mail: hakan@orhanonur.com
Semih Bayrak
E-Mail: semihbayrak@orhanonur.com

Hungary

S-Hansa Bt.
Keller Pál
Ősagárd u. 72
H-1172 Budapest
Tel +36-1-257-66-78
Fax +36-1-257-66-78
E-Mail: postmaster@shansa.axelero.net

Cyprus

DATARAIL
N. Steinhauer&Co.
Nikolaus Steinhauer
Akarnanias Str. 10
GR-115 26 Athen
Tel +30-210-7290708
Fax +30-210-7242040
E-Mail: info@datarail.gr
www.datarail.gr

AFRICA

Egypt

EL KARNAK AGENCY CO.
Extension of Guesr El Suez St.,
Block No. 2, Industrial Zone
EG-11769 Cairo
Sherif Azer Farag
Azer Farag Azer
Tel +202-2699-3921
Fax +202-26989581, +202-26981895
E-Mail: kaco@egts.com

Mauritania

RECOURS
Senny Ould Khy
S/c Motcar sall Abdoul Aziz
Nouakchott, Mauretanie
Tel. +222 22 30 20 26
E-Mail: senny.recours@gmail.com

ASIA

Hong Kong

Civil Link Ltd.
ROBEL Far East Representation
Mary Cheng
2001 Mega Trade Centre, 1-6 Mei Wan Street,
Tsue Wan NT Hong Kong
Tel +852-24017080
Fax +852-24017081
E-Mail: civilink@netvigator.com

China

Beijing AT Railway Equipment Co. Ltd.
Mr. Alex
Room 1018, daCheng ShiDai Building,
DaCheng Road 6
Feng Tai District 100141 Beijing, China
Tel +86 10 52 47 03 01
Fax +86 10 88 17 76 44
E-Mail: atrailway@126.com

India

Premier India Agencies
Sushil Somani
30-15-138, 1st Floor, Binayaka Complex
Dabagardens Main Road,
Visakhapatnam - 530 020
Tel +91-891-254-01-50, +91-891-256-29-50
+91-891-255-15-93
Fax +91-891-274-60-10
Mob +91-98481-98-484
E-Mail: ssomani@premierindia.org

Iran

AIRIA CO. LTD
Mr. Ali Khalili
Unit 201, No. 76 Vozara Bld
Vozara Street
151191861 Teheran, Iran
Tel +98 21 88 55 45 22
Tel. +98 21 88 55 51 96
E-Mail: office@airiagroup.com

Israel

Transport Technologies
PTR Trichter agencies Ltd. & Darital Transport
Technologies Ltd.
93 Ramat Yam Street,
Marine Heights Building
IL-Herzelia on sea 46851
Yoram Trichter
Tel +972 9 951 60 66; +972 542 518 514
Fax +972 9 951 60 77
E-Mail: yoramt@transtec.co.il
Amiassaf Saker
Tel +972 9 951 60 66; +972 542 518 514
Fax +972 9 951 60 77
E-Mail: amis@transtec.co.il

Japan

Nippon Plasser
Heinz Springer
1-33-1, Komagome,
1-chome Toshima-ku
Tokyo 170-0003, Japan
Tel +81 3 53 95 62 80
E-Mail: springer@nipponplasser.co.jp

Qatar

JD Integrated Services Co.
Wisam Dalloul
P. O. Box: 24664
Gate 151
Doha, Katar
Tel. +974 44 86 64 36
E-Mail: gm@jd-isc.com

Kazakhstan

UAB „KMT“ Savanoriu pr. 172
Kauno m. 54311,
Lithania
Tel: +370 37 37 74 25
Mob: +370 699 886 38
Vytautas Cesnulevicius
E-Mail: v.cesnulevicius@palfinger.lt
Arzuolas Kaminkas
E-Mail: azuolas.palfinger@gmail.com

Malaysia

KHB Klaus Hinzmann Baumaschinen
Am Bogen 3 58093 Hagen, Deutschland
Tel. +49 2331 52653
Mob. +49 171 9 90 59 04
E-Mail: kl-hinzmann@t-online.de

Saudi Arabia

Riyadh Establishment for Railway Supply
Eng. Ragaie Sobhy
Olaya - Riyadh - KS
P.O.Box 14089 - Riyadh 11424, SA
Tel +966-1-217-9633
Fax +966-1-217-9634
E-Mail: ragaie@riyadhestablishment.com

Syria

JOSEPH E. ASSOUD
Trading & Representation
Abdallah Assal
Motanabi Street,
Shorbaji Building, No. 55/10
Aleppo, Syria
Tel +963-21-2238367
Fax +963-21-2246317

United Arab Emirates & Oman

Techno Trade International
W. Willig
P.O.Box 262348
Jebel Ali Freezone
Dubai, Vereinigte Arabische Emirate
Tel +971-4-887-1910; +971-4-887-191
E-Mail: office@ttico.net

AUSTRALIA & NEW ZEALAND

K.H. 1
Daniel Mociak
13A The Crossway
AUS-Capbellfield, Victoria 3061
Tel +61-3-9357-5400
Fax +61-3-9357-5402
E-Mail: dmociak@KH1.com.au
www.KH1.com.au

This brochure shows a cross-section of the ROBEL product range. Apart from that, ROBEL supplies a wide variety of work vehicles with trailers, special equipment and stationary machines for work on rails and sleepers.

The pictures and descriptions may relate to additional or tailor-made devices which are not standard versions. The dimensions and technical data as well as kind, extent and positions of components and auxiliary equipment shown in this product range are not binding.

Information regarding traveling speed is provided subject to compliance with regulations regarding use such as operation, maintenance and transport and the relevant approval regulations. We reserve the right to make changes without prior notice. The individual agreement concluded is relevant. ROBEL Bahnbaumaschinen GmbH is an internationally registered trade mark. We reserve our copyrights.

ROBEL Bahnbaumaschinen GmbH

Industriestraße 31

D-83395 Freilassing

Phone: +49 (0)8654/609-0

Telefax: +49 (0)8654/609-100

E-mail: info@robel.info

www.robel.info

